



The Australian and New Zealand  
Society of Occupational Medicine

ANNUAL SCIENTIFIC MEETING 2020

19–22 MARCH 2020

# *Four Days* ON THE ISLAND

LAUNCESTON, TASMANIA

*Rescheduled: 19–22 November 2020*

Our “Four Days on the Island” will take place at Peppers Silos as initially planned and will reflect the current programming. However, there may be some changes depending on speakers’ and worksite availability. Of course, there is no guarantee that the COVID-19 situation will be fully resolved by November, but we will make further decisions as required.

SCIENTIFIC PROGRAM PARTNER



Australasian Faculty  
of Occupational and  
Environmental Medicine

MAJOR SPONSOR



Sonic  
HealthPlus

# WELCOME

On behalf of ANZSOM and the ASM2020 Organising Committee, we are pleased to welcome you to Launceston. This meeting promises to be something out of the ordinary with “Four Days on the Island” to connect, learn and share in this picturesque historic town. The conference venue, Peppers Silos Launceston, is idyllically located on the banks of the Tamar, offering sweeping views over the river and just a short walk to the city centre. The location, combined with a diverse selection of site visits, workshops and technical sessions, as well as numerous social and networking events will provide a unique and memorable experience.

We hope you enjoy it!

*Dr Barry Gilbert & Sandra Code, Conference Convenors*

## SPONSORS & SUPPORTERS

ANZSOM gratefully acknowledges the following sponsors, exhibitors and advertisers.



MAJOR SPONSOR



CONFERENCE DINNER  
SPONSOR



'SURPRISING LAUNCESTON'  
DINNER SPONSOR

### EXHIBITORS:



CHILL & RECHARGE SPONSOR

# CONFERENCE ESSENTIALS

## REGISTRATION DESK HOURS

Located outside the King's Wharf Lounge West.

## CONTACTS

For general enquiries, please contact the Secretariat on 0408 530 865.

## WIRELESS INTERNET

Wireless internet is available to all delegates through the Peppers Silo Hotel "guest" network. No login password required.

## DIETARY REQUIREMENTS

Delegates and speakers who have communicated their special dietary requirements to us will be catered for, either through the general selection of catering options or through a specific meal preparation. Please talk to the catering staff or staff at the Registration Desk if you require assistance.

## SITE VISIT REQUIREMENTS

Bookings for the site visits have been allocated prior to the ASM. For attendance lists see the Registration Desk or the ASM App. Buses will depart from Riverbend Park on Thursday and Friday afternoon, and from the front of the hotel on Friday morning. Some sites are within walking distance from the park/hotel – delegates should ensure they wear comfortable shoes. Departure times and PPE requirements for each site visit are listed on pages 5 and 6.

## FEEDBACK

Please provide feedback for each session (including workshops and site visits) via the ASM App. An overall conference survey will also be available at the end of the conference or online via the App.

## WIN FREE REGISTRATION TO ICOH2021 IN MELBOURNE

This year you will have a chance to win **free registration to next year's ICOH 2021 conference in Melbourne**, simply by visiting our exhibitors! Each exhibitor will have a unique stamp to record your visit on your ASM Passport. You'll find your Passport in your delegate satchel. Once you have all the stamps, record your name and contact details and pop it in the box at the Registration Desk. The winner will be drawn at the Closing Lunch on Sunday. To be eligible you will need to be at the lunch to receive the prize in person.

## FOLLOW US ON SOCIAL MEDIA

Follow, tag and share your snaps and stories during the conference! Use these hashtags:

#ANZSOM

#ASM2020



facebook.com/ANZSOM  
@ANZSOM



twitter.com/ANZSOM\_Inc  
@ANZSOM\_Inc



linkedin.com/in/anzsom  
@ANZSOM

## ASM APP

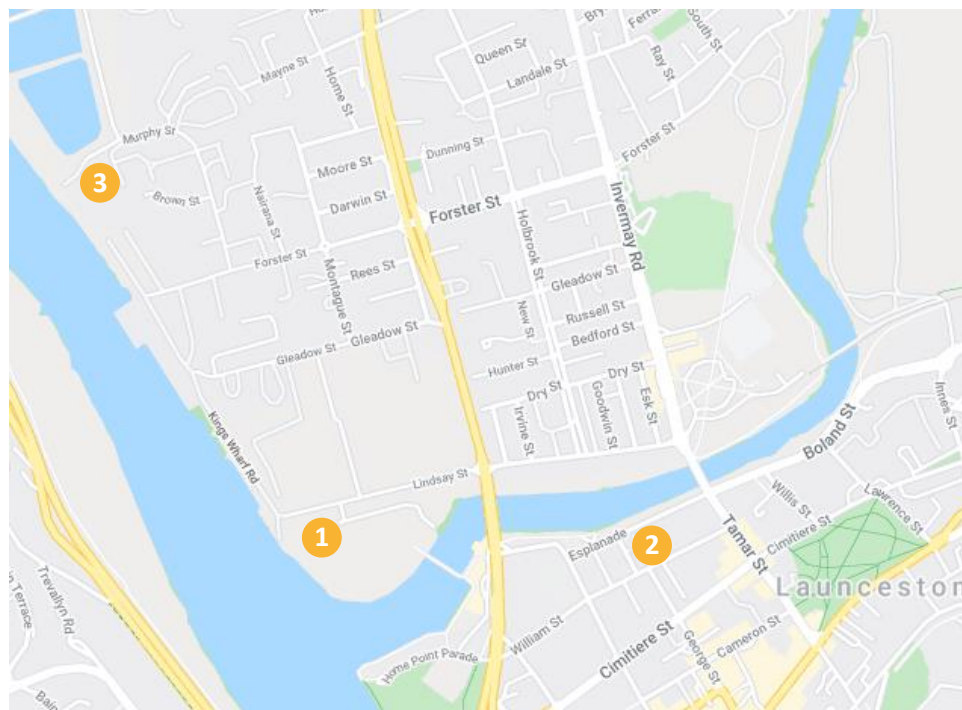
Make sure you download the ASM App for information and updates throughout the conference!





# GETTING YOUR BEARINGS

## KEY LOCATIONS



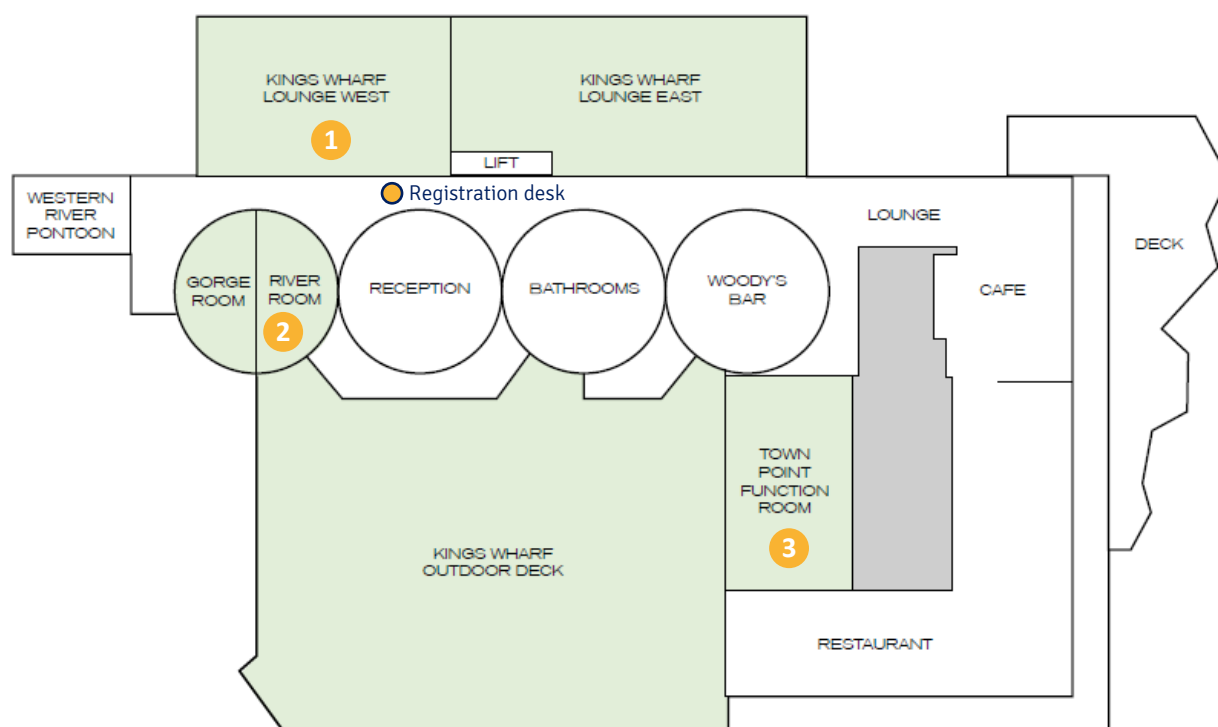
**1 Conference Venue  
Peppers Silo Launceston**  
89-91 Lindsay St, Invermay

**2 Boag Brewery (Site Visit)**  
39 William St, Launceston

**3 Tamar Valley Dairy (Site Visit)**  
1 River St, Invermay

**Not shown on map:  
Josef Chromy Wines**  
Conference Dinner  
370 Relbia Rd, Relbia  
Bus transport provided

## VENUE LAYOUT – Peppers Silo Launceston, Level 1



**1 Kings Wharf Lounge West**  
Welcome Reception, Technical sessions, Exhibition, Chill & Recharge

**2 River Room**  
Audiometry workshop

**3 Town Point Function Room**  
Presentation workshop, CPR skills update, Technical sessions

# SITE VISITS – Thursday & Friday

Full Registration delegates have **three separate opportunities** to attend site visits across Launceston - on Thursday afternoon, Friday morning and Friday afternoon. The Friday visits are also available to Day Registrants. Visits to local agricultural, industrial, and educational worksites will provide insight into the varying nature of work and the issues facing employers, employees and health professionals. Bookings for the site visits have been allocated prior to the ASM. For attendance lists see the Registration Desk or the ASM App.

Buses (or walking groups for close sites) will depart from Riverbend Park on Thursday and Friday afternoon, and from the front of the hotel on Friday morning. Departure times are as follows: Thursday 12.45m, Friday 9am and Friday 12.45pm.

**NOTE FOR AFOEM TRAINEES:** A site visit on the Friday afternoon will be allocated for undertaking requirements for the Direct Observation of Field Skills (DOFS). A debriefing meeting will follow on the Saturday morning.



## TAMAR VALLEY TRUFFLE FARM

Tamar Valley Truffle Farm is home of Tasmania's Black Perigord Truffle products, crafted from locally grown truffles and featuring a range of artisan products including truffle butter, truffle oil and truffle salt. The site visit will provide an opportunity to gain firsthand experience of this unusual industry and the occupational and environmental health considerations.

## BOAGS BREWERY

James Boag established the brewery in 1881 on the banks of the Esk River in Launceston, utilising the best of Tasmania's pure water and natural ingredients. The now state-of-the-art facility employs over 150 people and produces over 76 million litres of beer annually. The visit will provide an opportunity to experience the working brewery across all production processes and explore the occupational health challenges.



## PFD FOODS SERVICES

PFD Food Services encompasses processing, packing and distribution of a wide range of food products. There are over 70 branches nationally including four in Tasmania. The Launceston distribution warehouse handles a variety of goods, including frozen, chilled and dry goods, as well as some cheese production. Delegates will conduct a walk-through of the warehouse and witness the processes from freight delivery to storage, picking & packing to dispatch. You will also view temperature control and audit processes for HACCP compliance.

**PPE:** Closed shoes must be worn. Hi-vis tops will be provided.

## AUSTRALIAN MARITIME COLLEGE (UTAS)

The Australian Maritime College at the University of Tasmania is the national institute for maritime education, training and research. The suite of specialist teaching, learning and research facilities are internationally acclaimed and are used by Defence, industry and government organisations world-wide to answer leading-edge research questions. Delegates will tour some of AMC's facilities including the Hydrodynamic Towing Tank and the Model Test Basin. They will observe marine survival training taking place in the purpose-built Marine Survival Centre and obtain some hands-on experience in the Centre for Maritime Simulations.



# SITE VISITS – Thursday & Friday (continued)



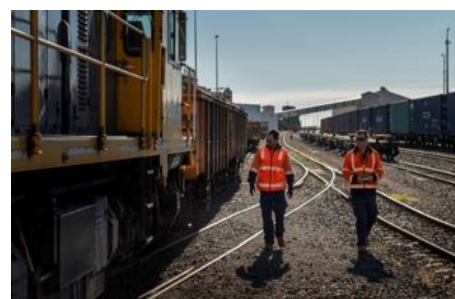
## HILLWOOD BERRY FARM

Hillwood Berry Farm is a second-generation family farm located on the banks of the Tamar River, 25kms north of Launceston. The farm boasts over 36 hectares of berries, including strawberries, raspberries, blackberries and blueberries. All berries are grown under protected cropping structures and almost all are grown using hydroponic growing principles. In addition to a diverse permanent workforce, the business relies on over 250 seasonal workers during peak harvest. The site visit will provide an opportunity to explore the production operation and discuss the workforce and occupational health considerations.

## TASRAIL RAIL YARD

TasRail is one of Tasmania's largest and most efficient logistics businesses and the supply chain partner of choice for the State's heavy industries and freight forwarders. Vertically integrated since its establishment as a State-owned company in 2009, TasRail is responsible for both safe and reliable Below Rail operations and a sustainable Above Rail business. Delegates will experience a guided tour of TasRail's primary rollingstock workshop where locomotives and wagons are maintained. The workshop will be operational with a variety of maintenance activities being performed. All TasRail workplaces have a zero drug and alcohol policy - random testing may occur.

**PPE:** Long trousers & sleeves, fully enclosed, sturdy footwear (steel caps preferred), hi-vis orange vest & safety glasses



## BLUELINE LAUNDRY INC.

Blueline Laundry is commercial laundry operation providing services to aged care, hospitality and healthcare businesses throughout Tasmania. In addition to providing a high quality laundry service and state-of-the-art equipment, they aim to offer rewarding employment opportunities for people with intellectual disabilities. This site visit will explore the common considerations for worker health. Delegates will be able to see the commercial laundry in operation, as well as view how Blueline employees with a disability are integrated into business operations.

## TAMAR VALLEY DAIRY

Tamar Valley Dairy is a yoghurt manufacturing facility, established in 1996. The site produces 330-350T of finished goods each week with a projected annual tonnage for 2020 to exceed 18 000T. The site runs 24/5 with 3 x 8hr shifts divided into processing and packaging scheduled in accordance with the projected orders for the week. Delegates will experience a safety induction and witness the shift change during a comprehensive tour of the facilities and production line.



## MOORE'S HILL VINEYARD

Moore's Hill vineyard is a boutique family operated winery located in the Tamar Valley. It is Tasmania's first off grid solar wine making operation, featuring 108 solar panels and 81kw gel battery storage. Their chief winemaker Jules Alport will lead the tour through the vineyard and wine making operations.



# DAY 1 - Thursday 19 March

## THURSDAY 19 MARCH

8.00am-5.00pm PRE-CONFERENCE WOKSHOPS

**"You Nailed It" - Presentation & Media Skills Workshop (pre-booked)**  
*Town Point Function Room*

Delivered by actor team Imogene and Christoph Hewitt from Resonant Integrity.

**Audiometry Skills Workshop (pre-booked)**  
*River Room*

Delivered by Glenn Johnson from The Hearing Company.

12.00pm-12.45pm LUNCH – PICNIC IN THE PARK – Riverbend Park (weather permitting)

12.45pm-4.30pm SITE VISITS

Bookings for the site visits have been allocated prior to the ASM. For attendance lists see the Registration Desk or the ASM App.

Buses (or walking groups for close sites) will depart from Riverbend Park from 12.45pm.



6.00pm-8.30pm WELCOME RECEPTION – PEPPERS SILO HOTEL



The Peppers Silo Hotel will host the Welcome Reception on Thursday evening, where guests will enjoy innovative cuisine incorporating fresh Tasmanian ingredients and a selection of local wines. The Welcome Reception is included in Full Registration and may be purchased separately for Day Registrants and guests/partners.

Proudly sponsored by:



# DAY 2 - Friday 20<sup>th</sup> March

## FRIDAY 20 MARCH

### WORKSHOP

9.00am-12.00pm

#### CPR Skills Update (pre-booked)

##### *Town Point Function Room*

The CPR Skills Update provides an opportunity to meet your certification requirements. In line with the specifications for **HLTAID001 Provide Cardiopulmonary Resuscitation**, the course will cover:

- response to emergency situations
- performance of CPR procedures
- communication of details of the incident, and
- administering defibrillation.



### MORNING SITE VISITS

9.00am-11.30am

Bookings for the site visits have been allocated prior to the ASM. For attendance lists see the Registration Desk or the ASM App.

Buses (or walking groups for close sites) will depart from the front of the hotel at 9am.



12.00pm-12.45pm LUNCH – PICNIC IN THE PARK – Riverbend Park (weather permitting)

### AFTERNOON SITE VISITS

12.45pm-4.30pm

Bookings for the site visits have been allocated prior to the ASM. For attendance lists see the Registration Desk or the ASM App.

Buses (or walking groups for close sites) will depart from Riverbend Park from 12.45pm.



#### *NOTE FOR AFOEM TRAINEES:*

The TasRail site visit has been allocated for the Direct Observation of Field Skills (DOFS). A debriefing meeting will follow on the Saturday morning.



## FRIDAY 20 MARCH

6.30pm - 11.30pm CONFERENCE DINNER, JOSEF CHROMY WINES



Josef Chromy Wines provides a spectacular setting for the main Conference Dinner, located on a 61-hectare vineyard estate just south of Launceston. Josef and his team combine attentive service, quality produce and careful attention to detail, guaranteeing a night to remember.

We are honoured to have Associate Professor Terry Hannan speaking on his career as a general physician and the importance of listening to our patients, also the topic of his book, 'Bedtime Stories'.

Following on from an impactful engagement at the Tamar Valley Writer's Festival 2018, where his session was considered the best received and most attended, Professor Hannan has taken time from the publication of his second book to attend the ASM and honour us with his collected wisdom.



**JOSEF CHROMY**  
TASMANIA



*'Bedside Stories: Learning to listen' by Tasmanian general physician Terry Hannan is a deeply personal book, which gives unique insights into the relationships between doctors and their patients. It reveals that despite all the important focus on scientific and medical advances, what's just as important is that patients feel like they are being heard, and that doctors need to sit and listen to what their patients are telling them. 'Bedside Stories: Learning to listen' is undoubtedly one of the best books in its genre. - Sophie Scott, Medical Reporter, ABC*

Proudly sponsored by:

**mlcoa**

# DAY 3 - Saturday 21 March

## SATURDAY 21 MARCH

### SOCIAL & NETWORKING MORNING

8.30am

#### AFOEM TRAINEE NETWORKING & DEBRIEFING BREAKFAST

A great opportunity for trainees to get together and build their networks. This session will also serve as a debrief for the Direct Observation of Field Skills conducted at the site visit on Friday afternoon.

9.00am

#### HARVEST LAUNCESTON COMMUNITY MARKET

Every Saturday morning, Harvest Launceston Community Farmers' Market brightens a quiet inner-city car park and brings the farm gate to you. You will have a chance to meet the farmers, connect with locals and enjoy a visual feast of seasonal produce and products including ethically raised meat, organic dairy, artisan bread and pastries, local wine and cider and much more. Savour a locally roasted coffee and taste your way around the foodie state at this vibrant weekly event.

For more information go to <https://harvestmarket.org.au/>



12.00pm-5.00pm

#### EXHIBITION - *Kings Wharf Lounge West*



12.00pm

#### LUNCH



### NEED TO CHILL AND RECHARGE?

Check out the Chill & Recharge space in the exhibition hall, where you can sit, relax and recharge (including your phone)! The Chill & Recharge space is kindly supported by Customer 1<sup>st</sup> Finance.



CUSTOMER 1<sup>ST</sup>  
FINANCE

# SATURDAY 21 MARCH

1.00pm

## *Town Point Function Room*

### All you need to know about the occupational consequences of COVID-19 (Coronavirus disease 2019)

**Professor Katie Flanagan**, Director of Clinical Infectious Diseases in Northern Tasmania

**Sandra Code**, Health Services Manager, Transdev Melbourne

**Sally Kane**, EHS Manager Agilent Technologies Australia P/L

At the time of writing this introduction the COVID-19 outbreak of respiratory disease has led to an emerging, rapidly evolving worldwide situation, and whilst a WHO declared public health emergency of international concern, by the time of ANZSOM2020 it may be a global pandemic. Some would call it a global panic.

This session will give delegates the opportunity to understand the global and local consequences, have a better understanding of the evolving clinical picture, and what this means for Australian global travel, government, business, the health system and individuals.

We are very fortunate indeed to have this professional panel, that will allow your questions to be answered.

## PARALLEL TECHNICAL SESSIONS

2.00pm

## *Town Point Function Room*

### Medicinal marijuana – seeing through the smoke

**Dr David Hamilton**, Specialist Pain Medicine Physician

Medical use of cannabis has been a hot topic over the last 12 months. This session will address the current evidence for the use of cannabis-based products relating specifically to chronic pain, as well as the current legislation, professional opinions from the colleges and implications for the workplace. It will also include the history of cannabis use, the pharmacology of the endocannabinoid system and the impact of exogenous cannabinoids.

## *Kings Wharf Lounge West*

### Cases in maritime health and safety

**Dr Maurice Harden**, Occupational and Environmental Physician, Hunter Industrial Medicine

**Dr Neil Westphalen**, Medical Practitioner, Royal Australian Navy

This session will address a case of a serious accident in a marine pilot to highlight the high risks of this specialised maritime role. It will include the circumstances of the incident, the short- and long-term clinical consequences and the accident investigation and outcome.

2.30pm

### The current landscape of OEM training

**Dr Amy Bright**, Occupational Physician Registrar, AFOEM Federal Trainee Representative Stage B

**Dr Thea Leman**, Occupational Physician Registrar, ANZSOM General Council Federal AFOEM Representative, AFOEM Trainee Stage A

**Dr Carlin White**, Occupational Physician Registrar, Gilbert Consulting

Why choose Occupational and Environmental Medicine as a career? This interactive panel presentation and discussion will draw on the experience of three trainees through the training process.

### Australian occupational audiometry: legislation, protocols and best practice

**Glenn Johnson**, Principal Occupational Audiologist, The Hearing Company

While national consistency across Australia in occupational audiometry legislation hasn't worked out as planned. There are legal requirements in most jurisdictions to conduct audiometric surveillance on noise-exposed workers. This presentation will provide an update on the current status of audiometry legislation around Australia and an overview of the best practice protocols for conducting accurate audiometry and managing test results.



# SATURDAY 21 MARCH

3.00 -3.30pm AFTERNOON TEA

## PARALLEL TECHNICAL SESSIONS *(continued)*

3.30pm

### *Town Point Function Room*

#### **Determinants of mental stress and dysfunction among sportspeople**

**Professor Tim Driscoll**, Professor of Epidemiology and Occupational Medicine at School of Public Health, University of Sydney

Professional, and indeed amateur sportspeople have always experienced physical injuries that are generally dealt through a medical model that is well understood. Increasingly there appears to be an increase in “mental health issues” that are less well understood. This presentation will outline the distribution and determinants of this phenomenon in a manner that will help our overall understanding.

### *Kings Wharf Lounge West*

#### **Cyber security 101 - risks and solutions in the digital age**

**Clayton Cross**, Head of Strategy, Conversion Digital

Cyber security is a significant risk for industry and healthcare. Understanding the risks, getting the right advice and implementing workable solutions should be high on our list of priorities in order to protect our businesses, clients and patients. This is an essential session for those looking for direction on this important issue.

4.00pm

#### **The (new) draft radiofrequency exposure standard**

**Dr Bruce Hocking**, Occupational Physician

This session will explain the new radiofrequency exposure standard with emphasis on application in workplaces. There will include a brief refresher on the electromagnetic spectrum and the biophysics of radiofrequency radiations, as well as recent research regarding mobile phones and brain tumours and the potential health effects of the upcoming 5G mobile phone system. The standard specifies the situations in which the occupational exposure limits may be applied and the obligations of employers or operators of radiofrequency sources to employees.

#### **The assessment and prevention of thermal injuries**

**Dr Angus Forbes**, Occupational Physician, Phoenix Occupational Medicine

Heat, electricity and environmental injuries make up about 1% of worker injuries in Australia, and there is an increasing interest as industries seek to address concerns about climate change. This session aims to equip delegates to provide evidence-based advice to workplaces and workers. It describes the spectrum of thermal conditions and their challenges in the workplace and describes how to assess the thermal risks to the workplace and determine appropriate prevention strategies.



## STAY UP-TO-DATE WITH THE CONFERENCE APP

Powered by Superevent, The ANZSOM ASM2020 Conference App gives you real-time access to all conference information. You can also choose to use the App to network with your fellow delegates through messaging and posting comments and questions.

To get started, download the Superevent App from the AppStore (iOS) or GooglePlay (Android) and access the event by entering your personal invitation code that you would have received by email. See the Registration Desk if you require the code.

Get started, get involved!

# SATURDAY 21 MARCH

## PARALLEL TECHNICAL SESSIONS *(continued)*

4.30pm

### *Town Point Function Room*

#### **Colour vision requirements – case studies**

**Dr John Parkes**, Colour Vision Specialist & Occupational Physician

**Dr Karina Powers**, Occupational Health Physician

This session will address the different colour vision deficits and the difficulties experienced with various work tasking and potential risk with safety critical work. It will include examples of employment where colour vision is integral to role.

### *Kings Wharf Lounge West*

#### **A clinical take on health and wellbeing**

**Meg Parsons**, Clinical Governance Manager, Bodycare

Wellbeing, wellness, mindfulness, digital health, detox, intermittent fasting, office yoga, resilience training, sleep training, treadmill desks, fitness challenges... there is no doubting that the Corporate Wellness juggernaut has gained significant momentum in recent years. But do these programs really make a difference and what is their impact among the blue-collar workforce? This session will explore the evidence and describe experience in delivering wellbeing programs to a variety of blue-collar industries, sharing learnings on what works, what doesn't and what's next.

### 6.00pm 'SURPRISING LAUNCESTON' - DINNER

Launceston is full of surprises! But you'll have to wait to find out more.

Proudly sponsored by Medilaw



## WIN FREE REGISTRATION TO ICOH2021 and other great prizes

This year you will have a chance to win free registration to next year's ICOH2021 Congress in Melbourne, simply by visiting our exhibitors! Each exhibitor will have a unique stamp to record your visit on your ASM Passport. You'll find your Passport in your delegate envelope. Once you have all the stamps, record your name and contact details and pop it in the box at the Registration Desk.

The winner will be drawn at the Closing Lunch on Sunday. To be eligible you will need to be at the lunch to receive the prize in person.

*N.B. not all exhibitors are attending every day of the conference, please check your passport to make sure you don't miss anyone!*



# DAY 4 - Sunday 22<sup>nd</sup> March

## SUNDAY 22 MARCH

9.00am-1.00pm

EXHIBITION – *Kings Wharf Lounge West*



TECHNICAL SESSIONS – *Kings Wharf Lounge West*

9.00am

### Hugh Denehy Oration

**Dr Chris Walls**, Occupational Physician, Occupational Medicine Specialists

Dr Hugh Denehy was a founding father of ANZSOM, and a well-respected leader in the field of occupational medicine. Delivery of the oration in his name is a highlight of the Annual Scientific Meeting, bestowed on an ANZSOM member who espouses the qualities of Hugh Denehy and his great contribution to the field of occupational medicine.

9.30am

### The hearing loss journey – from challenges to solutions

**Michelle Moran**, Clinical Audiologist, PhD

**Lucy Collignon**, Speech Pathologist

Hearing impairment is poorly understood by many health professionals. It may arise as a noise induced loss, but can also be associated with other causes such as ageing, diabetes and injury to name a few. Increased knowledge of the links between hearing loss with social isolation and dementia demonstrate the need to consider hearing in the discussion of healthy ageing. Once a person has been identified as having a hearing impairment and assessments have been conducted as to the nature and degree of the loss, the question becomes how to intervene to improve quality of life and communication outcomes. This presentation will transform your level of knowledge of hearing and provide additional tools in your toolkit for management of hearing deficits. The session will be accompanied by a display of prostheses options and an opportunity to discuss funding options.

10.30am

MORNING TEA



# SUNDAY 22 MARCH

## TECHNICAL SESSIONS – *Kings Wharf Lounge West*

11.00am

### Regulatory failure: what have recent events taught us?

**Dr Rob McCartney**, Occupational Physician, Resile

**Dr David Goddard**, Occupational Physician, Monash University

Recently in Australia there has been concern regarding regulatory failure in banking, building and OHS. In OHS there have been clusters of coal workers pneumoconiosis and silicosis – both preventable diseases. The session will examine the extent to which there has been regulatory failure and what can be done about it including the role for ANZSOM

11.30am

### Occupational rehabilitation and injury prevention – case studies

**A/Prof Terry Hannan**, Consultant Physician, Visiting Fellow, Australian Institute of Health Innovation, Macquarie University, Sydney

**Marcus Burston**, Exercise physiologist, and Managing Director of AIM Health and Lifestyle, Launceston

**Dr Barry Gilbert**, Public Health Physician and Occupational Medicine Consultant, Gilbert Consulting Tasmania

**Dr Carlin White**, FRACGP, Registrar in Occupational & Environmental Medicine, Gilbert Consulting Tasmania

Case studies will be presented for active discussion, including the management of chronic pain and the benefits of physical movement in occupational rehabilitation. There will be a particular focus on the shoulder, knee, ankle and lumbar spine.

12.30pm

## LUNCH @ PEPPERS SILOS – *Kings Wharf Lounge West*



1.30pm

## CONFERENCE CLOSE



## DOWNLOAD YOUR ATTENDANCE CERTIFICATE

This year, attendance certificates will be available to download via the ASM App. An overall conference feedback survey will also be available via the App. Everyone who completes the overall feedback survey will go in the draw to win a night's stay at Peppers Silos Launceston.



# ICOH 2021

[www.ich2021.org](http://www.ich2021.org)

HOSTED BY



## SHARING SOLUTIONS IN OCCUPATIONAL HEALTH: Locally, Regionally, Globally

33rd International Congress on Occupational Health

21-26 March 2021 | MELBOURNE AUSTRALIA



## JOIN US IN MELBOURNE FOR ICOH 2021

Visit [www.ich2021.org](http://www.ich2021.org) for further information

**REGISTRATION  
NOW OPEN**  
**EARLY BIRD  
SAVINGS  
ON OFFER**



**CALL FOR  
ABSTRACTS  
NOW OPEN**