

Perspectives in Occupational Health



Annual
Scientific
Meeting 2018
7–10 October
Melbourne

Proudly sponsored by



The Australian and New Zealand Society
of Occupational Medicine Inc. (ANZSOM)



SPONSORS & SUPPORTERS

ANZSOM gratefully acknowledges the following sponsors, exhibitors and advertisers. Refer pages 25 to 28 for more information about each company.

MAJOR SPONSOR



WELCOME RECEPTION SPONSOR



CONFERENCE DINNER SPONSOR



NURSES DINNER SPONSOR



SESSION SPONSORS



EXHIBITORS



ADVERTISERS



WELCOME

On behalf of the Vic/Tas Branch Organising Committee I extend to you a very warm welcome to Melbourne, the sporting and cultural capital of Australia and one of the most livable cities in the world!

The theme of this year's conference, "Perspectives in Occupational Health", highlights the broad scope of occupational health practice, as well as the synergy between the worker, the workplace and the occupational health professional.

As always, the Organising Committee has been working hard to secure a wide range of high calibre speakers to share their expertise and experience and bring learning to life across a variety of fascinating areas. This year we offer clinical updates on silicosis, orthopaedic surgery and traumatic brain injury, which link in with practical sessions on topics such as functional capacity assessment. The colour vision workshop, Q & A expert panel on bullying, harassment and occupational violence and eight fascinating worksite visits are just a few further examples of the practical approach which is the hallmark of ANZSOM ASMs.

This year is a special one for ANZSOM as we celebrate 50 years since we were formed and 10 years since the occupational health nurses joined the Society. It has certainly been a fruitful partnering of both groups and has strengthened the expertise and drive of all members. We will be celebrating this extraordinary achievement with a Gala Dinner at the iconic MCG and will be reminiscing over the past 50 years with friends and colleagues around Australia and "across the ditch"!

I would like to thank all our sponsors, exhibitors and advertisers for their support. In particular our major sponsor Sonic HealthPlus, who have supported our conferences continuously in recent years.

Of course, all of this organisation does not happen without a team of dedicated individuals and I would like to thank my team, Sandra Code, Hilary Oakley, Robyn Laurie, Bruce Hocking, Nathan Pastor, Barry Gilbert, Virginia Li, Liz Keating, Jill Plummer, Cathie Vickers-Willis and Fiona Landgren. A special mention to Greame Kane who has put together an exciting partners program.

I hope you all enjoy the next 3 days and take the opportunity to view the exhibitors stands and relax in the Chill and Recharge space. It has been a pleasure creating this amazing program and I hope you have an opportunity to learn, network with old and new friends, and marvel at the 50 years of ANZSOM.

Ms Sally Kane

President ANZSOM VIC/TAS Branch
Conference Chairperson ASM 2018



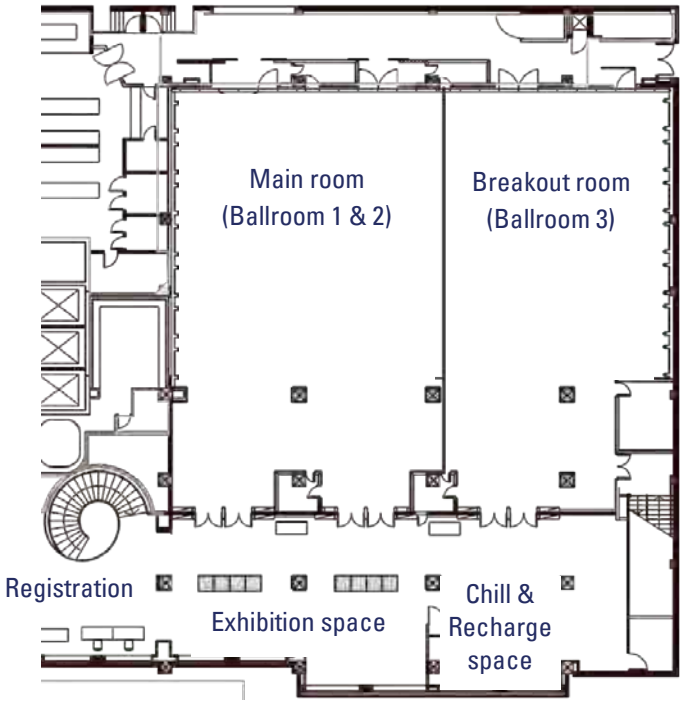
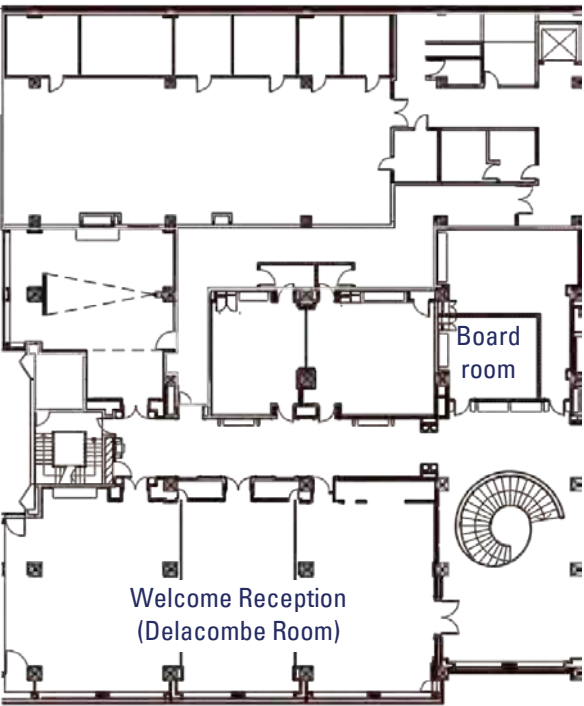
GETTING YOUR BEARINGS

KEY LOCATIONS

- Pullman Melbourne on the Park
192 Wellington Parade
- National Sports Museum, Melbourne Cricket Ground
Enter via Gate 3, Level 1
- Melbourne Cricket Ground, Jim Stynes Room
Enter via Gate 3, Level 2
- Nurses dinner, Monday 8th October – Felt Restaurant
26 Flinders Street (by invitation only)



VENUE LAYOUT (Level 1)



NEED HELP?

REGISTRATION DESK HOURS

Located at the Pullman – Level 1 Foyer

Sunday 7 October	5.30pm - 9.00pm
Monday 8 October	8.00am - 5.00pm
Tuesday 9 October	8.00am - 5.00pm
Wednesday 10 October	7.30am - 5.00pm

CONTACTS

For enquiries regarding the conference, please contact the Secretariat (Cathie) on 0412 089 594. For enquiries regarding the Partners Program, please contact Greame Kane on 0488 666 148.

FEEDBACK

Please provide feedback for each session (including site visits, CPR updates and workshops) via the ASM App. An overall conference survey will also be available at the end of the conference or online via the App.

WIRELESS INTERNET

Wireless internet is available to all delegates through the Pullman Hotel network. Guests to log in as **'Pullman Conf.'** The password is **ANZSOM2018**.

SPEAKER REQUIREMENTS

ANZSOM welcomes all our generous speakers. Please be sure to arrange loading of your presentation well before your session. For assistance please go to the Registration Desk.

DIETARY REQUIREMENTS

Delegates and speakers who have communicated their special dietary requirements to us will be catered for, either through the general selection of catering options or through a specific meal preparation. Please talk to the catering staff or staff at the Registration Desk if you require assistance.

SITE VISIT REQUIREMENTS

Bookings for the site visits have been allocated prior to the ASM. For attendance lists see the Registration Desk or the ASM App. Buses for the visits will depart from the front of the hotel from 1.00pm. PPE requirements for each site visit are listed on page 10 and 11.

WIN FREE REGISTRATION TO ASM2019 IN ADELAIDE

This year you will have a chance to win free registration to next year's conference in Adelaide (and many more prizes), simply by visiting our exhibitors! Each exhibitor will have a unique stamp to record your visit on your ASM Passport. You'll find your Passport in your delegate envelope. Once you have all the stamps, record your name and contact details and pop it in the box at the Registration Desk. The winner will be drawn at the Awards Lunch on Wednesday. To be eligible you will need to be at the lunch to receive the prize in person.

FOLLOW US ON SOCIAL MEDIA

Follow, tag and share your snaps and stories during the conference! Use these hashtags: **#ANZSOM #ASM2018**



facebook.com/ANZSOM
@ANZSOM



twitter.com/ANZSOM_Inc
@ANZSOM_Inc



linkedin.com/in/anzsom
@ANZSOM

ASM APP

Make sure you download the ASM App for information and updates throughout the conference

<http://apps.apps-builder.com/521892>



GETTING TO KNOW MELBOURNE

With Melbourne's combination of world-class dining, art galleries, home-grown fashion and a packed sports calendar, it's no surprise Victoria's capital is regarded as one of the world's most liveable cities.

Melbourne hosts some of Australia's most prestigious events throughout the year, including Melbourne Cup, Australian Open tennis, Melbourne Food & Wine Festival, and block buster exhibitions such as the Museum of Modern Art, New York MoMA on until the 7th October at the NGV Australia.

With Jolimont train station just across the road from the Pullman Hotel and a tram stop right out the front, you are just minutes from the CBD and everything that Melbourne has to offer. Or for a free tram ride around the city, simply walk a few hundred metres to Spring Street and hop on the City Circle tram (Route 35).

For more information go to www.visitmelbourne.com.

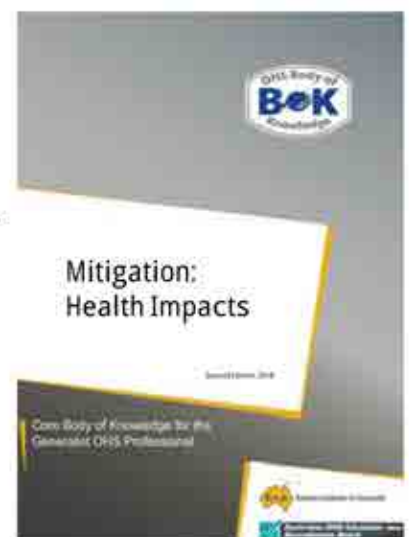


Managing work-related health impacts – a team activity

A joint project between ANZSOM and the Safety Institute of Australia has resulted in a new chapter in the OHS Body of Knowledge on Mitigation: Health Impacts.

This chapter is freely available to all at www.ohsbok.org.au and we commend it to all OHS professionals and occupational health practitioners. It not only provides core information on mitigating health impacts post injury or exposure, it also provides a focus for discussion between OHS professionals and occupational health practitioners.

Melinda Miller, President, ANZSOM
David Clarke, CEO, Safety Institute of Australia



SOCIAL PROGRAM

Welcome Reception – Pullman Melbourne on the Park

Sunday 7th October, from 6.30pm (Delacombe Room, Level 1)

The Welcome Reception will provide an opportunity to catch up with colleagues in a relaxed atmosphere, enjoying local wines and great food.

The Welcome Reception is included in the cost of full registration.

Sponsored by mlcoa



10th Anniversary Nurses Dinner – Felt Restaurant (by invitation only)

Monday 8th October, from 6.30pm

This year we are pleased to announce a very special event for our occupational health nurse members as we celebrate 10 years since the Australian College of Occupational Health Nurses merged with ANZSOM. Nurses make up a significant, and we hope growing segment of the Society, and they take on a variety of important roles in workplaces throughout Australia.

Brought to you by Resile
*Maximising the health,
wellbeing and productivity
of your workforce*



50th Anniversary Gala Dinner – Melbourne Cricket Ground

Tuesday 9th October, 6pm (National Sports Museum tour – Gate 3),
7pm (Gala Dinner – Jim Stynes Room – Gate 3)

Held at the iconic Melbourne Cricket Ground, the gala evening will kick off with a guided tour of the National Sports Museum – home to Australia’s largest collection of sporting memorabilia. Mingle over pre-dinner drinks in the Jim Stynes Room overlooking the ground. Festivities will continue over a delectable three-course meal showcasing quality produce. Special guests include Clare Amies, CEO of WorkSafe Victoria and Bill Glass, one of the early pioneers of occupational medicine in Australia and New Zealand, who will share their reflections and insights in the field of occupational health and medicine. Dance the night away with one of Melbourne’s best DJs, playing all your favourites from the last 50 years.

The NSM tour and Gala Dinner is included in the cost of full registration.

Sponsored by eReports



PARTNERS PROGRAM

A range of activities will be on offer for partners and accompanying guests. These activities are included in the cost of the Partners Program registration. Additional tickets can be purchased from the Registration Desk. For enquiries regarding the Partners Program, please contact Greame Kane on 0488 666 148.

Sunday 7th October

Welcome Reception

Pullman Melbourne on the Park, 6.30pm to 9pm

Monday 8th October

"Golden" Morning tea

Pullman Melbourne on the Park, 10.30am – 12.30pm

A morning with two outstanding Australian Gold medalists from the Victorian Institute of Sport who will share their life and achievements in sport – including the highs and the lows. This will be unique, inspiring and entertaining.

Afternoon at your leisure to explore Melbourne

Suggested roof top dining and bar experiences – see the ASM App

Tuesday 9th October

Pilates in the park (all welcome – sign up at Registration Desk)

Yarra Park (opposite Pullman Hotel), 7am – 7.45am

In case of inclement weather, pilates will be held in the conference foyer (Level 1).

Eureka Skydeck tour

Meeting point: Pullman Hotel, 10.30am – 12.30pm

Join us on a journey passing iconic landmarks to Eureka Skydeck for a spectacular view of Melbourne and then onto the Southbank shopping precinct. Then journeying to Crown casino to walk through the quality shopping environment and along the Yarra River to DFO South Wharf. DFO is a direct to the public shopping centre that provides popular brand names at warehouse prices. (Lunch etc. at own expense)

National Sports Museum tour at the MCG

6pm – enter via Gate 3, Level 1

Conference Gala Dinner at the MCG (Jim Stynes Room)

7pm – enter via Gate 3, Level 2

Wednesday 10th October

Laneway Tour

Meeting point: Pullman Hotel, 10.30am – 12.30pm

Walking past Cooks Cottage this laneway tour will take in Melbourne's culture and history. Street Art in ACDC lane, The Ian Potter Centre NGV Federation Square, Flinders Street Railway station, Chloe at Young & Jacksons, Degraives St, Block Arcade (est. 1892) and other lanes will be explored. Finally arrive at Melbourne Central & Emporium for quality shopping time. (Lunch etc. at own expense)





Australia's most
trusted provider

OF

Occupational
Health

AND

General
Medicine

SERVICES



Sonic
Health**Plus**

1300 793 004
sonichealthplus.com.au

SITE VISITS

Bookings for the site visits on Monday 8th and Wednesday 10th October have been allocated prior to the ASM. Buses for the visits will depart from the front of the hotel from 1.00pm. PPE requirements described are those that must be provided by the delegate.

Boeing Aerostructures Australia

Monday 8th October – 1.30pm departure

Boeing’s manufacturing facility, based in Lorimer Street Port Melbourne, is the largest Boeing site outside of North America and manufactures flight control surfaces for Boeing aircraft including the 787 Dreamliner, 777, 737 and 747. This will be a rare opportunity to observe the manufacturing process of this state-of-the-art facility. A presentation by the Environment Health and Safety team will provide insight into the management of injury risks and environmental issues. **PPE:** Delegates to bring own steel cap boots, safety glasses and hi-visual vest. **No PPE, no entry**



Nestle Confectionery

Monday 8th October – 1.00pm departure

Nestle’s confectionery plant in Campbellfield manufactures 28,000 tonnes of chocolate every year, and employs 320 workers. During this site visit, delegates will observe various factory processes with an opportunity to discuss the management of workplace risks, focusing on hazardous manual handling and tasks involving repetitive or awkward movements. **PPE:** Delegates to bring own steel cap boots and long pants. Other PPE to be provided.



Victoria Police Operational Safety and Tactics Training Facility

Monday 8th October – 1.00pm departure

Over 15,000 Police Officers and Protective Service Officers undertake training in Operational Safety and Tactics biannually. During this visit delegates will observe this training and gain an understanding of the inherent physical and psychological demands of police work. There will be the opportunity to discuss the medical and psychological issues that Police Officers face and how Police Medical Officers contribute to the health and safety of the workforce. **PPE:** All PPE will be provided including hearing protection.



WISE Employment: Employment programs for people with mental illness

Monday 8th October – 1.30pm departure

Gaining access to suitable employment is a key aspect of recovery for people living with a severe mental illness. The WISE Ways to Work program assists with skills development, graded exposure to work, and employment opportunities. This visit will support understanding of the value of employment for people with a severe mental illness, the challenges of securing and maintaining work and the importance of vocational rehabilitation. From an employer’s perspective, there will be an opportunity to explore issues regarding attendance and productivity, integration into the workforce, and provision of appropriate support to staff with mental illness. **PPE:** None.



SITE VISITS

Cochlear Care Centre

Wednesday 10th October – 1.30pm departure

The Cochlear Implant was developed in Melbourne by Professor Graham Clark and his team in 1978. Since then, doctors, researchers and clinicians have continued their ground breaking work to make the Cochlear Implant the standard of care for children and adults with a severe or profound hearing loss. The Cochlear Care Centre is a partnership between Cochlear Ltd and The Royal Victorian Eye and Ear Hospital, providing long term support for all recipients with Cochlear Ltd devices. Delegates on this site visit will explore how the implant works and who it is appropriate for. Delegates will also tour the Cochlear Care Centre and possibly meet a recipient who will discuss their experience with the Cochlear Implant. **PPE:** None.



Metropolitan Remand Centre

Wednesday 10th October – 1.15pm departure

The Metropolitan Remand Centre is a maximum security facility at Ravenhall in Melbourne's west. The prison houses up to 883 inmates, most of whom are awaiting the outcome of their court case. During this site visit, delegates will have a unique opportunity to observe and gain a better understanding of the inherent physical and psychological demands of prison officers. Please note that delegates will be subject to eye scanning and wand for security check. **PPE:** Delegates are required to wear enclosed flat shoes and to bring ID. No bags/phone/electronics/fit bits allowed during site visit.



Defence, Science & Technology (DST) Group

Wednesday 10th October – 1.30pm departure

DST is the Australian government's lead agency responsible for applying science and technology to safeguard Australia and its national interests. As one of Australia's largest employers of scientists and engineers, DST delivers expert, impartial advice and innovative solutions for defence and national security. The visit to the laboratory at Fisherman's Bend will feature state of the art research facilities, such as the environmental test facility, low speed and transonic wind tunnels, combustion test facility, and physical performance standard work areas. **PPE:** Delegates are required to wear enclosed flat shoes.



Walter & Eliza Hall Institute of Medical Research

Wednesday 10th October – 1.30pm departure

The Walter and Eliza Hall Institute of Medical Research is Australia's oldest medical research institute, founded in 1915. The institute hosts more than 1,000 scientists, support staff and students who work to understand, prevent and treat diseases including blood, breast and ovarian cancers; inflammatory diseases (autoimmunity) such as rheumatoid arthritis, type 1 diabetes and coeliac disease; and infectious diseases such as malaria, HIV and hepatitis B and C. This site visit will provide delegates with an overview of the Institute, its history and the latest research coming out of it. It will also include a tour of the research laboratories led by Institute researchers. **PPE:** Delegates are required to wear enclosed flat shoes.



WORKSHOPS & COURSES

Colour vision deficiency as it applies to occupations (pre-booked)

Monday 8th October, 1.30pm

Learning aims:

- Understand the types of colour vision deficiencies and their genetic basis
- Understand how colour vision deficiencies affect the neural processing in the retina
- Conduct competent intermediate level colour vision screening, general diagnosis and grading of colour vision defects
- Understand the principles of conducting a risk assessment of a job where red/green colour discrimination is involved
- Understand current Australian colour vision occupational standards their application and the higher-level testing involved



CPR skills update (pre-booked; USI required)

Monday 8th and Wednesday 10th October, 1.30pm

This is a popular feature of the ASM, providing delegates with an opportunity to meet their certification requirements. In line with the specifications for *HLTAID001 Provide Cardiopulmonary Resuscitation*, the course will cover:

- Response to an emergency situation
- Performance of CPR procedures
- Communication of details of the incident
- Defibrillation



Mental Health First Aid Course (pre-booked)

Wednesday 10th October, 1.30pm

The Blended Mental Health First Aid Course is a combination of online (eLearning) and a half day of face-to-face training.

The online pre-learning aspect takes approximately 3-4 hours and should ideally be completed before attending the conference and within 3 months of the session. Content includes mental health problems, mental health crises and provision of initial assistance to an adult developing a mental health problem or in a mental health crisis.

The face-to-face workshop will provide an opportunity to apply this knowledge and skills to specific scenarios. Participants then complete a short online assessment in order to receive a Mental Health First Aider Certificate of Accreditation which is valid for 3 years. Accredited Mental Health First Aiders are eligible to be appointed as Mental Health First Aid Officers in the workplace.





HOSTED BY




ICOH 2021

www.ich2021.org

SHARING SOLUTIONS IN OCCUPATIONAL HEALTH: Locally, Regionally, Globally

33rd International Congress on Occupational Health

21-26 March 2021 | MELBOURNE AUSTRALIA



Join occupational health researchers, practitioners and policy makers from across the globe in Melbourne at the world's largest occupational health congress to share collective knowledge and expertise about improving worker health and safety.



Visit www.ich2021.org for further information



Providing Specialist Occupational Hygiene Consulting Services In the Areas of:

- Occupational Hygiene and Toxicology
- Workplace Exposure Assessment and Advice on the Control of Dusts and other Chemicals Physical and Biological Hazards
- Asbestos and Hazardous Materials Auditing & Monitoring
- Indoor Air Quality including Mould
- Dangerous Goods Storage and Handling
- Advice on Regulatory Compliance
- NATA Accredited Laboratory for Asbestos & Air Monitoring (NATA Accreditation No. 2867)
- OH&S Risk Management
- Manual Handling and Ergonomics
- OH&S Training

**MEMBERS OF THE AUSTRALIAN INSTITUTE
OF OCCUPATIONAL HYGIENISTS (AIOH)**

NMC **AMCOSH Pty Ltd**

Advice Measurement and Control in Occupational Safety & Health

Ph: 1300 622 494

Email: enquiries@amcosh.com.au

www.amcosh.com.au

SUNDAY 7 OCTOBER

2.00pm – 6.00pm	ANZSOM General Council Meeting Pullman – Boardroom, Level 1
5.30pm – 9.00pm	Registration Pullman – Level 1 Foyer
6.30pm – 9.00pm	Welcome Reception (included in full registration and Partners program) Pullman – Delacombe Room, Level 1

MONDAY 8 OCTOBER

8.00am	Registration Pullman – Level 1 Foyer
8.45am	President’s welcome and welcome to country
9.00am	KEYNOTE ADDRESS Workplace mental health: developing an integrated approach Professor Tony LaMontagne , Professor of Work, Health & Wellbeing, Centre for Population Health Research, Deakin University Professor LaMontagne leads a research unit in Work, Health & Wellbeing, and from 2016 also serves as overall Director of the Centre for Population Health Research. His broad research interest is in developing the scientific and public understanding of work as a social determinant of health, and translating this research into policy and practice to improve workplace and worker health. 
10.00am	MORNING TEA
10.30am	SESSION THEME: Clinical Perspectives <i>Chairperson: Bruce Hocking</i> Silicosis – new lessons from an old disease Dr Ryan Hoy , Respiratory Sleep Disorders Physician Learning aims: <ul style="list-style-type: none">• Be aware of modern industries associated with silicosis.• Understand the different forms of silicosis• Be aware of current exposure standards related to crystalline silica• Be aware of principle of health surveillance in association with crystalline silica exposure• Understand management principles related to silicosis <div>Pre-reading (open access)<ul style="list-style-type: none">• Hoy R et al, Artificial stone-associated silicosis: a rapidly emerging occupational lung disease. Occupational & Environmental Medicine January 2018 (https://bit.ly/2xx75yU)• Zosky G et al, Coal workers’ pneumoconiosis: as Australian perspective. Medical Journal of Australia 2016;204(11):414-418 (https://bit.ly/2QKGgA4)</div>



NEED TO CHILL AND RECHARGE?

Check out the Chill & Recharge space in the foyer, where you can:

- Sit, relax and recharge (including your phones!)
- Try your hand at Giant Jenga and Connect Four
- Interact with products, services and information for improving mental health in the workplace

11.30am	<p>Advances in hip and knee surgery: the implications for tradespeople and emergency service workers</p> <p>Mr Dirk Van Bavel, Orthopaedic Surgeon</p> <p>Learning aims:</p> <ul style="list-style-type: none">• Know recent advances in hip and knee surgery for trauma and osteoarthritis, including robotic assisted surgery, partial knee replacements and less invasive fracture fixation• Know the potential and the limitations of these advances regarding return to work for tradesmen and emergency service workers• Know the relevant physiotherapy/exercise physiology/home exercise regime relevant for return to work in these jobs
12.30pm	<p>LUNCH</p>
From 1.00pm – 4.30pm SITE VISITS	
<p>Nestle Confectionery (1.00pm departure)</p> <p>Nestle's confectionery plant in Campbellfield manufactures 28,000 tonnes of chocolate every year, and employs 320 workers. During this site visit, delegates will observe various factory processes with an opportunity to discuss the management of workplace risks, focusing on hazardous manual handling and tasks involving repetitive or awkward movements.</p> <p>Victoria Police Operational Safety and Tactics Training Facility (1.00pm departure)</p> <p>Over 15,000 Police Officers and Protective Service Officers undertake training in Operational Safety and Tactics biannually. During this visit delegates will observe this training and gain an understanding of the inherent physical and psychological demands of police work. There will be the opportunity to discuss the medical and psychological issues that Police Officers face and how Police Medical Officers contribute to the health and safety of the workforce.</p> <p>Boeing Aerostructures Australia (1.30pm departure)</p> <p>Boeing's manufacturing facility, based in Lorimer Street Port Melbourne, is the largest Boeing site outside of North America and manufactures flight control surfaces for Boeing aircraft including the 787 Dreamliner, 777, 737 and 747. This will be a rare opportunity to observe the manufacturing process of this state-of-the-art facility. A presentation by the Environment Health and Safety team will provide insight into the management of injury risks and environmental issues.</p> <p>WISE Employment: Employment programs for people with mental illness (1.30pm departure)</p> <p>Gaining access to suitable employment is a key aspect of recovery for people living with a severe mental illness. The WISE Ways to Work program assists with skills development, graded exposure to work, and employment opportunities. This visit will support understanding of the value of employment for people with a severe mental illness, the challenges of securing and maintaining work and the importance of vocational rehabilitation. From an employer's perspective, there will be an opportunity to explore issues regarding attendance and productivity, integration into the workforce, and provision of appropriate support to staff with mental illness.</p>	
1.30pm – 4.30pm WORKSHOP	
<p>Main room (Ballroom 1 & 2)</p> <p><i>Chairperson: Nathan Pastor</i></p> <p>Colour vision deficiency as it applies to occupations</p> <p>Facilitators: Dr John Parkes, Occupational Physician, Dr Amanda Douglass, Associate Lecturer in Optometry and Vision Science</p> <p>Learning aims:</p> <ul style="list-style-type: none">• Understand the types of colour vision deficiencies and their genetic basis• Understand how colour vision deficiencies affect the neural processing in the retina• Conduct competent intermediate level colour vision screening, general diagnosis and grading of colour vision defects• Understand the principles of conducting a risk assessment of a job where red/green colour discrimination is involved• Understand current Australian colour vision occupational standards: their application and the higher-level testing involved	
1.30pm – 4.30pm SKILLS UPDATE	
<p>Breakout room (Ballroom 3)</p> <p>Cardiopulmonary Resuscitation (CPR) Update</p> <p>A popular feature of the ASM, this session provides delegates with an opportunity to meet their certification requirements. In line with the specifications for <i>HLTAID001 Provide Cardiopulmonary Resuscitation</i>, the course will cover:</p> <ul style="list-style-type: none">• Response to an emergency situation• Performance of CPR procedures• Communication of details of the incident• Defibrillation	
6.30pm – 9.00pm 10 TH ANNIVERSARY NURSES DINNER, Felt Restaurant (by invitation only)	
<p>This year we are pleased to announce a very special event for our occupational health nurse members as we celebrate 10 years since the Australian College of Occupational Health Nurses merged with ANZSOM. Nurses make up a significant, and we hope growing segment of the Society, and they take on a variety of important roles in workplaces throughout Australia.</p> <p>Brought to you by Resile – Maximising the health, wellbeing and productivity of your workforce.</p>	



TUESDAY 9 OCTOBER

9.00am

SESSION THEME: Work Settings

Chairperson: Barry Gilbert

Farmer's health: living longer on the land

Susan Brumby, Director of the National Centre for Farmer Health

Dr Cathy Bones, Occupational and Environmental Medicine Consultant

Dr Iain Nicolson, General Practitioner, Sale

Learning aims:

- Understand what the National Centre for Farmer Health in Australia is doing to address agricultural health and medicine knowledge gaps
- Identify the major physical, mental health and safety concerns regarding farmers, including their prevention
- Be aware of issues in the management of farmers with physical or mental health problems

Session sponsored by:



safe work australia

Pre-reading (open access)

- Brumby S et al. Farming Fit – dispelling the Australian Agrarian Myth BMC Research Notes 2011 (<https://bit.ly/2PNkwIN>)
- Brumby S et al. Alcohol consumption, obesity and psychological distress in farming. Journal of Rural Health 2013;29:311-319 (<https://bit.ly/2PLKDcK>)
- National Centre for Farmer Health www.farmershealth.org.au

10.30am

MORNING TEA



Spirometry Training Company delivers engaging courses that will equip participants with the theoretical framework and practical skills to conduct spirometry according to the international quality standards

ACCREDITED
SPIROMETRY TRAINING
WORKSHOP

ACCREDITED
SPIROMETRY REFRESHER
TRAINING

SPIROMETRY
INTERPRETATION WORKSHOP

- ! Accredited for QLD Coal Mine Workers Health Scheme
- ! Registered for NSW Coal Services Order 43
- ! Suitable for Health Surveillance for Crystalline Silica
- ! Suitable for Primary Care and Occupational Health Facilities



11.00am	<p>SESSION THEME: Workplace Risks</p> <p><i>Chairperson: Sally Kane</i></p> <p>PANEL – Bullying, harassment and occupational violence: strategies for success</p> <p>Moderator: Professor Andrea De Silva, Director of Research, WorkSafe Victoria</p> <p>Panel: Irene Verins, VicHealth; Sandra Code, Transdev; Wayne Richards, Transdev; Anna Pannuzzo, WorkPlacePLUS; Foti Blaher, Victoria Police; Ian Sutcliffe, WorkSafe Victoria</p> <p>A panel of experts will explore principles and approaches to successfully addressing bullying and harassment in the workplace and occupational violence, drawing on program examples from a variety of industries.</p> <p>Learning aims:</p> <ul style="list-style-type: none">• Identify the different types of behavior and the negative implications on a variety of workers• Be aware of the responsibilities of workplaces to manage these behaviors• Understand the management strategies undertaken by employers to protect their workers• Be aware of current solutions that workplaces have adopted to counter negative behavior	<p>Session sponsored by:</p> 
12.30pm	LUNCH	
1.30pm	<p>PARALLEL SESSIONS</p> <p><i>Chairperson: Dr Virginia Li</i></p> <p>Main room (Ballroom 1 & 2)</p> <p>Functional capacity assessment – getting it right</p> <p>Dr Amanda Silcock, Dr Andrea James, Specialist Occupational Physicians, Carmen Betteridge, Psychologist, Mark Hazelton, Occupational Health Advisor</p> <p>This practical and interactive session will provide an opportunity for in-depth exploration of functional assessment for fitness for duty.</p> <p>Learning aims:</p> <ul style="list-style-type: none">• Be able to assess in the clinic an individual's functional capacity for work• Be able to communicate advice/opinion to patient/worker and employer on functional capacity for work• Be able to refer appropriately to another practitioner for additional information on functional work capacity	<p><i>Chairperson: Sandra Code</i></p> <p>Breakout room (Ballroom 3) 1.30pm – 2.15pm</p> <p>Audiometry and the industrial setting – what have we learnt and where are we going?</p> <p>Tim Rayner, Audiologist</p> <p>Learning aims:</p> <ul style="list-style-type: none">• Understand current legislation within different states• Understand the importance of consistency of service provision• Understand quality of service provision• Understand the importance of a hearing conservation program <p>Spirometry update 2.15pm – 3.15pm</p> <p>Brigitte Borg, Respiratory Function Scientist, Alfred Lung Centre</p> <p>Learning aims:</p> <ul style="list-style-type: none">• Understand the quality outcomes of the Queensland Coal Mine Worker's Health Scheme review of 2016• Understand the resultant changes in requirements for those performing spirometry for the assessment of coal mine workers• Understand the broader applications of the changes
3.15pm	AFTERNOON TEA	



DON'T FORGET TO CHILL AND RECHARGE

Check out the Chill & Recharge space in the foyer and join us for a game of Giant Jenga!
Or simply sit, relax and recharge (mind, body and phone!)

TUESDAY 9 OCTOBER

4.00pm / 3.30pm – 5.00pm	<p>PARALLEL SESSIONS</p> <p>SESSION THEME: Legal Main room (Ballroom 1 & 2) 4.00 – 5.00pm <i>Chairperson: Dr Tim Stewart</i> There but for the grace of God – medico-legal indemnity Dr Tim Stewart, Occupational Physician Anna MacLeod, Head of Medical Defence and Services, Avant Learning aims</p> <ul style="list-style-type: none">• Be aware of trends in medical indemnity claims relevant to occupational medicine• Consider settings in occupational medical practice at risk for medical indemnity claims and how to avoid such claims• Know supports available in the event of such claims	<p>SESSION THEME: Professional Breakout room (Ballroom 3) 3.30 – 5.00pm WORKSHOP – OHN competencies Facilitators: Sally Kane, Robyn Laurie, ANMF representative This workshop builds on the successful workshop conducted at the ASM in 2017. Learning aims:</p> <ul style="list-style-type: none">• Understand the different roles of OHN's and their practice across a variety of different jurisdictions• Explore the identification of specialty nursing areas and how AHPRA views these• Gain knowledge from other nursing specialties and how they have developed National Professional Practice Standards	
6.00pm – 7.00pm	<p>NATIONAL SPORTS MUSEUM TOUR (pre-booked with registration) MCG, enter via Gate 3, Level 1</p>		<p>Dinner sponsored by:</p>  
7.00pm – 11.30pm	<p>50th ANNIVERSARY GALA DINNER MCG, Jim Stynes Room, enter via Gate 3, Level 2</p> <p>Speakers: Clare Amies, CEO WorkSafe Victoria, Bill Glass, Occupational Physician</p> <p>Mingle over pre-dinner drinks in the Jim Stynes Room overlooking the ground. Festivities will continue over a delectable three-course meal showcasing quality produce. Featuring special guests including Clare Amies, CEO of WorkSafe Victoria and Bill Glass, one of the early pioneers of occupational medicine in Australia and New Zealand, who will share their reflections and insights in the field of occupational health and medicine. Dance the night away with one of Melbourne's best DJs, playing all your favourites from the last 50 years.</p>		





Occupational Therapists look no further than Insurance House.

Medical Indemnity insurance available
online with instant policy confirmation.

Visit www.insurancehouse.com.au/buy-online
or call 1300 305 834 for your broader insurance
needs including Workers Compensation.

Any advice in this publication is of a general nature only and has not been tailored to your personal circumstances. Please seek personal advice prior to acting on this information. Before making a decision to acquire a financial product, you should obtain and read the Product Disclosure Statement (PDS) relating to that product.

Insurance House Pty Ltd ABN 33 006 500 072 AFSL 240954

DAVID GODDARD AWARD FOR BEST PAPER

Named in honour of long-standing member and respected educator Dr David Goddard, this award aims to recognise contributions to knowledge and practice in occupational medicine.

David Goddard graduated in medicine from Monash University in 1969. Post-graduate coursework led to his obtaining a Diploma in Occupational Health (University of Sydney, 1975) and a Master in Health Professional Education (Monash University, 2010). He has worked in occupational medicine since 1973 and as a medical educator since 1990. His years of experience with the railways, State Government Occupational Health Service, State Worker's Compensation system and his network of practitioner friends have contributed in their own ways to his teaching.

David teaches medical undergraduates in occupational medicine and has taught postgraduate students in occupational hygiene, toxicology and basic OHS. He has a passion for teaching, which in 2001 led to his being awarded the Monash University Vice-Chancellor's Award for Distinguished Teaching.

Between 2008 and 2013, he worked part-time as lead Fellow in educational development with the Australasian Faculty of Occupational & Environmental Medicine (AFOEM) in the Royal Australasian College of Physicians. He led development of a new training curriculum, a training handbook, formative assessments and the summative assessment for basic trainees. In May 2013, he received the AFOEM President's award for outstanding contribution to education, training and assessment.

The David Goddard Award for Best Paper will be presented at during a lunch awards ceremony on Wednesday 10th October.



WEDNESDAY 10 OCTOBER

8.15am – 9.15am	ANZSOM Annual General Meeting, Main room <i>(Light breakfast provided)</i>	
9.30am	<p>PARALLEL SESSIONS</p> <p>Main room (Ballroom 1 & 2) <i>Chairperson: Bruce Hocking</i></p> <p>Traumatic brain injury – achieving employment after injury</p> <p>Professor Ian Cameron, Rehabilitation Medicine Physician</p> <p>Learning aims</p> <ul style="list-style-type: none">• Know the complex interaction of neurological, cognitive and behavioural impairments following head injury• Be able to assess patients with head injury for these impairments regarding their impact on employability• Be aware of recent advances in managing these impairments in relation to employment• Be able to interact with a rehabilitation physician/team regarding employability after head injury <p>Pre-reading (open access)</p> <ul style="list-style-type: none">• Traumatic brain injury – support for injured people and their carers AFP 2014. (https://bit.ly/2xADLZ6)• iCare Brain injury services (https://bit.ly/20MhvC6)	<p>Breakout room (Ballroom 3) <i>Chairperson: Jill Plummer</i></p> <p>The Obesity Crisis – How can occupational health professionals influence change</p> <p>Jane Martin, Executive Manager of the Obesity Policy Coalition (OPC) and Alcohol and Obesity Policy at Cancer Council Vic.</p> <p>Learning aims</p> <ul style="list-style-type: none">• Understand the obesity crisis in Australia and how it is affecting all areas of society, including the workplace• Identify strategies that occupational health professionals could use to positively influence a change in behaviour of workers• Be aware of how the media influences personal choice and how public policy can make a positive change for a healthier lifestyle
10.30am	<p>CONTRIBUTED PAPERS <i>Chairperson: Nathan Pastor</i></p> <p>Influencing recovery from work injury from an insurer's perspective Dr Chris Colquhoun and Dr Victoria Oey, icare (NSW)</p> <p>Emergency medical management in extreme remote locations Dr Devandran Kumarasamy, Petronas (Malaysia)</p> <p>Workplace health and wellbeing: good foundations matter Clara Walker and Dr Amy Timoshanko, Cancer Council Victoria (VIC)</p>	<p>CONTRIBUTED PAPERS <i>Chairperson: Beata Byok</i></p> <p>New perspectives in occupational medicine and suicide prevention: a call for action Carmen Betteridge, Suicide Risk Assessment Australia (NSW)</p> <p>Mental health in hospital healthcare workers Dr Gan Wee Ho, Dr Wycliff Wei, Dr Melvin Seng (Singapore)</p> <p>Development of safe patient handling policy in Japan Lisa Harman, Safe Work Practice (Australia) (SA)</p> <p>Work related mental health programs Dr David Gras, Work Life Well (VIC)</p>
11.30am	MORNING TEA	
12.00pm	<p>Hugh Denehy Oration</p> <p>Sally Kane, Chair ANZSOM Vic/Tas Branch – refer bio on opposite page</p>	
12.45pm	<p>AWARDS LUNCH</p> <p>Relax and enjoy a sit-down lunch with your colleagues and join us in recognising contributions to ANZSOM. Winners of prizes will also be announced.</p>	

WEDNESDAY 10 OCTOBER

From 1.00pm – 4.30pm SITE VISITS

Metropolitan Remand Centre (1.15pm departure)

The Metropolitan Remand Centre is a maximum-security facility at Ravenhall in Melbourne's west. The prison houses up to 883 inmates, most of whom are awaiting the outcome of their court case. During this site visit, delegates will have a unique opportunity to observe and gain a better understanding of the inherent physical and psychological demands of prison officers. Please note that delegates will be subject to eye scanning and wanding for security check

Cochlear Care Centre (1.30pm departure)

The Cochlear Implant was developed in Melbourne by Professor Graham Clark and his team in 1978. Since 1978, Doctors, researchers and clinicians have continued their ground breaking work to make the Cochlear Implant the standard of care for children and adults with a severe or profound hearing loss. The Cochlear Care Centre is a partnership between Cochlear Ltd and The Royal Victorian Eye and Ear Hospital, providing long term support for all recipients with Cochlear Ltd devices. Delegates on this site visit will explore how the implant works and who it is appropriate for. Delegates will also tour the Cochlear Care Centre and possibly meet a recipient who will discuss their experience with the Cochlear Implant.

Defence, Science & Technology (DST) Group (1.30pm departure)

DST is the Australian government's lead agency responsible for applying science and technology to safeguard Australia and its national interests. As one of Australia's largest employers of scientists and engineers, DST delivers expert, impartial advice and innovative solutions for defence and national security. The visit to the laboratory at Fisherman's Bend will feature state of the art research facilities, such as the environmental test facility, low speed and transonic wind tunnels, combustion test facility, and physical performance standard work areas.

Walter & Eliza Hall Institute of Medical Research (1.30pm departure)

The Walter and Eliza Hall Institute of Medical Research is Australia's oldest medical research institute, founded in 1915. The institute hosts more than 1,000 scientists, support staff and students who work to understand, prevent and treat diseases including blood, breast and ovarian cancers; inflammatory diseases (autoimmunity) such as rheumatoid arthritis, type 1 diabetes and coeliac disease; and infectious diseases such as malaria, HIV and hepatitis B and C. This site visit will provide delegates with an overview of the Institute, its history and the latest research coming out of it. It will also include a tour of the research laboratories led by Institute researchers.

1.30pm – 6.00pm WORKSHOP

Main room (Ballroom 1 & 2)

Mental Health First Aid

Facilitator: David Bastian

The Blended Mental Health First Aid Course is a combination of online (eLearning) and a half day of face-to-face training.

The online pre-learning aspect takes approximately 3-4 hours and should be completed before attending the conference but within 3 months of the session. Content includes mental health problems, mental health crises and provision of initial assistance to an adult developing a mental health problem or in a mental health crisis. The face-to-face workshop will provide an opportunity to apply this knowledge and skills to specific scenarios.

Participants then complete a short online assessment in order to receive a Mental Health First Aider Certificate of Accreditation which is valid for 3 years. Accredited Mental Health First Aiders are eligible to be appointed as Mental Health First Aid Officers in the workplace.

1.30pm – 4.30pm SKILLS UPDATE

Breakout room (Ballroom 3)

Cardiopulmonary Resuscitation (CPR) Update

A popular feature of the ASM, this session provides delegates with an opportunity to meet their certification requirements. In line with the specifications for *HLTAID001 Provide Cardiopulmonary Resuscitation*, the course will cover:

- Response to an emergency situation
- Performance of CPR procedures
- Communication of details of the incident
- Defibrillation

6.00pm CONFERENCE WIND-UP, Pullman Melbourne on the Park, The Cliveden Bar, Ground floor

SALLY KANE – HUGH DENEHY ORATION 2018

On the 10th Anniversary of the merging of ANZSOM with the Australian College of Occupational Health Nurses (ACOHN), it is fitting that Ms Sally Kane will be delivering the 2018 Hugh Denehy Oration. Sally's career in occupational health spans more than 30 years, with her interest sparked in the 1980's while working at Heathrow Airport in London. Her passion for worker health and preventative health in general has seen her take up roles in a variety of settings including manufacturing, hospitality, and various service industries. She has held her current position of Environment Health and Safety Manager at Agilent Technologies, a multinational high-tech company in the analytical chemical instrumentation business, for 26 years and has overseen many changes in the way people work and in the management of health and safety. Sally has worked tirelessly in support of her profession, firstly with the ACOHN and now with ANZSOM. She has chaired the Victorian / Tasmanian Branch for almost six years and is the convenor of the 2018 Annual Scientific Meeting. To all these roles she has brought an unwavering commitment, which combined with a great sense of humour, has inspired those around her to get things done! When she is not championing occupational health, Sally sings in a pop choir and is the driving force behind calisthenics in her local community.



INVITED SPEAKERS

Professor Tony LaMontagne

Work, Health & Wellbeing, Director, Centre for Population Health Research, Deakin University

Professor Tony LaMontagne leads the Work, Health & Wellbeing Unit in the Centre for Population Health Research at Deakin University, where he also serves as overall Director of the Centre for Population Health Research. His broad research interest is in developing the scientific and public understanding of work as a social determinant of health and translating this research into policy and practice to improve workplace and worker health. Specific areas of interest include workplace mental health, improving job quality and psychosocial working conditions, and evaluating government policy interventions. Intervention research studies have included process and effectiveness studies, quantitative and qualitative methods, and study designs ranging from case studies to large-scale cluster randomized controlled trials. His research and publications have influenced policy and practice in workplace health internationally.

Carmen Betteridge

Psychologist

Carmen is a Registered Psychologist with almost 20 years of experience working with clients across the lifespan, from teenagers to the elderly. For the past 12 years, Carmen has worked as a Consultant Psychologist providing specialist assessments in psychological disorders and psychological injury for the insurance and corporate sectors, functional capacity assessments and clinical needs assessments. She also completes pre-employment psychological screening for high risk and high consequence industries, including aviation. Her interests include workplace responses to suicidal employees and supporting people return to work following suicide attempt and psychological crisis. At present, Carmen is a member of several working groups, including an international working group on the impact of working with suicidality on the practitioner and Australian practitioner guidelines for working with suicidality.

Dr Foti Blaher

Senior Police Medical Officer, Victoria Police

Dr Foti Blaher is the Senior Police Medical Officer at Victoria Police. His principal duties are to provide medical advice and assessments for medical fitness for duties of police officers and medical suitability of recruits. He is a Designated Aviation Medical Examiner, Medical Review Officer and medical assessor of commercial divers. Before this role he was the Company Doctor for Toyota Motor Company, Australia.

Dr Cathy Bones

Consultant Occupational and Environmental Physician

Cathy has worked for 20 years in general practice and for the last 10 years as a specialist physician in occupational and environmental medicine. She has worked with Alcoa Portland Aluminium, Medibank Workplace Health and has undertaken FIFO work, including emergency care, in indigenous communities in remote WA and Queensland. Cathy worked for 2 years in a clinical governance role at Portland District Health, also supporting the hospital's HMO's. She now undertakes Consulting and IME work through eReports. Cathy lives on a small farm in rural Victoria with her family, her dogs and her horses.

Brigitte Borg

Senior Respiratory Scientist and Deputy Head, Physiology Service - Respiratory Medicine -The Alfred

Brigitte Borg is a certified respiratory function scientist with 25 years' experience. She currently manages the Lung Function Laboratory at The Alfred, Melbourne. Brigitte's areas of interest include lung function interpretation (for which she co-authored a book in 2014), laboratory accreditation, quality spirometry in primary care, and oxygen therapy. Most recently, Brigitte has coordinated the adult clinical streams for the Hazelwood Health Study.

Professor Susan Brumby

Director, National Centre for Farmer Health

Sue is the Founding Director of the National Centre for Farmer Health - an innovative partnership between Western District Health Service and Deakin University. Prior to joining the NCFH, Sue was Director of Community Services at Western District Health Service. Her research interests are farmer health, rural health literacy and increasing cultural competency around agricultural health and medicine for health and agricultural professionals. She is the course director of Australia's only post graduate Agricultural Health and Medicine course and a graduate of the Australian Rural Leadership program.

Professor Ian Cameron

Consultant Physician in Rehabilitation Medicine

Professor Ian Cameron is a clinician researcher who heads the John Walsh Centre for Rehabilitation Research at the University of Sydney. His major research interests are rehabilitation and disability, particularly in older people and people with severe injury, and the obscure discipline of compensation health. Ian is a NHMRC Senior Practitioner Fellow.

Sandra Code

Health Services Manager, Transdev Melbourne

Sandra Code is an occupational health professional who holds a post graduate Degree in Occupational Health from Monash University and has been an active member of ANZSOM for 10 years. Her particular passion is proactively managing injured or ill employees to ensure their prompt return to full duties. Through early intervention and her experience in managing WorkCover claims and RTW she has been successful in supporting a broad range of employees. For the past 2 years Sandra has been the Health Services Manager of Transdev Melbourne looking after all aspects of WorkCover injury management and the health and wellbeing of 1,200 bus drivers.

Professor Andrea de Silva

Director of Research, WorkSafe

Professor Andrea de Silva is currently the Director of Research at WorkSafe Victoria and an adjunct Professor at Monash University School of Public Health and Preventive Medicine. Andrea is a multidisciplinary public health research professional with over 20 years' experience at the top levels of research, evaluation, knowledge translation and stakeholder engagement. Her research experience is diverse, spanning the breadth of molecular biology, epidemiology, behavioural science, community development, health systems, public health, clinical interventions and law. Andrea has led the development, implementation and evaluation of significant collaborative, applied and policy-relevant research programs, with a focus on system, policy and program solutions to health problems, translating evidence into practice, and creating transformative change which is sustainable and reduces health inequalities.

INVITED SPEAKERS

Dr Amanda Douglass

Associate Lecturer in Optometry and Vision Science

Amanda Douglass is an associate lecturer in the Department of Optometry at Deakin University. After graduating from Optometry at the University of Melbourne in 2008, Amanda started working in Geelong at OPSM. In 2012, Amanda commenced as a postgraduate researcher at The University of Melbourne and completed her Graduate Certificate in University Teaching in 2014 and her PhD in 2016. Amanda has active research interests in eye movements, attention, and colour vision.

Mark Hazelton

Occupational Health Advisor

Mark is a registered Div1 nurse, a registered physiotherapist, a Return to Work Coordinator and a nurse immuniser. Currently he is working as an Occupational Health Advisor at Viva Energy Australia. His interest is in occupational health nursing and physiotherapy with a focus on prevention, early injury intervention and an approach to injury management and return to work that is collaborative and driven by care.

Dr Ryan Hoy

Respiratory and Sleep Disorders Physician

Dr Ryan Hoy is a respiratory and sleep disorders physician practising in Melbourne. He undertook a clinical fellowship in occupational lung disease at the University of Toronto and obtained a Master's degree of Occupational and Environmental Health at Monash University in 2009. He is a senior research fellow at the School of Public Health, Monash University and Visiting Medical Officer at The Alfred and Cabrini Hospitals, Melbourne. His research interests include occupational asthma, work-associated laryngeal dysfunction and occupational interstitial lung diseases including silicosis.

Dr Andrea James

Occupational Physician

Dr Andrea James is an occupational physician who chose to work in occupational medicine after a career in general practice. She gained her AFOEM Fellowship in 2010 and has worked in a broad range of occupational medicine roles including Health Manager for a petroleum company and consulting to the transport industry, Zoos Victoria, mining companies and government departments. Andrea has an interest in the assessment of fitness for work, drugs and alcohol in industry, fatigue risk management and psychological ill health in the workplace. Andrea has been a past chairperson for the Technical Advisory Committee of Healthwatch a major long-term study of the health and wellbeing of workers in the petroleum industry. Andrea is also a sessional tutor for Monash university's occupational medicine programs at the undergraduate and postgraduate levels.

Anna Macleod

Head of Medical Defence and Services, Avant Mutual Group Limited

Anna is currently the Head of Medical Defence and Services, Vic and ACT, at Avant Mutual where she works with a highly skilled team of claims managers and solicitors to provide medical indemnity services and support to their members. At Avant, she has also held the role of Senior Claims manager and Medico-Legal Advisor where her role primarily focused on the strategic management and co-ordination of members' claims.

Jane Martin

Executive Manager of the Obesity Policy Coalition (OPC) and Alcohol and Obesity Programs Cancer Council Victoria

Jane leads the Obesity Policy Coalition, a partnership between Cancer Council Victoria, Diabetes Victoria and the Globe Obesity Centre at Deakin University. She advocates for policy and regulatory reform to prevent overweight and obesity, with a focus on food marketing, labelling, and tax and pricing measures. For more than 25 years, Jane has worked extensively in public health advocacy, including tobacco control, alcohol policy and obesity prevention. Her interests lie in advocacy, research and partnerships to support policy reform. Jane is a Senior Fellow at the University of Melbourne in the Faculty of Medicine, Dentistry and Health Sciences. She is co-chair of the National Alliance for Action on Alcohol, Vice President of the ANZ Obesity Society, a fellow of the Williamson Leadership program and was awarded a Churchill Fellowship in 2011.

Dr Iain Nicolson

General Practitioner, Sale Medical Centre

Dr Iain Nicolson is the founding general practitioner of the Sale Medical Centre, with over 40 years of rural medical practice behind him. His interests, apart from providing general practice care, are occupational medicine and legal medicine. He is a senior member of St John Ambulance Australia. He is also a Senior Lecturer in the Monash University Rural Health Program based in Bairnsdale. In addition, Iain is a recognised WorkCover Medical Examiner.

Anna Pannuzzo

Director, WorkPlacePLUS

Anna is an expert in people and culture in the health and community services sector, with more than 25 years of senior HR management experience in the disability, aged care, health and not-for-profit industries. Her knowledge, expertise and no-nonsense, straight-talking approach supports employers to overcome the challenges of performance management, restructuring and complex workplace issues. She has been a guest speaker on ABC Radio National's "Best Practice" program, discussing workplace grievances and independent workplace investigations, and has conducted professional training programs on bullying and harassment, performance management and workforce planning for some of Australia's leading aged care, community and health care organisations. Anna is degree qualified (B.Business HR/IR) and a Certified Professional Member of the highly regarded Australian Human Resources Institute, Industrial Relations Society of Victoria, Australasian Association of Workplace Investigators and NSW Business Chamber. Anna's nursing background provides a unique insight to the HR challenges facing many employers.

Dr John Parkes

Occupational & Environmental Physician, Colour Vision Specialist

Dr John Parkes is an experienced occupational physician who runs the Occupational Colour Vision Clinic in the Department of Optometry and Vision Sciences at the University of Melbourne, where he has a comprehensive colour vision testing laboratory. He is an Honorary Senior Fellow and teaches occupational colour vision to optometry students. He has conducted reviews of colour vision standards for a number of National and State organisations including Defence, rail, maritime, fire brigades and police. He is a member of the International Colour Vision Society. His approach combines a thorough understanding and application of colour vision testing with risk assessment.

INVITED SPEAKERS

Tim Rayner

Audiologist

After graduating as an audiologist, Tim was employed as a solo audiologist with the Health Department of Victoria in Sunbury and at Warrnambool Base Hospital as Chief Audiologist. He also began a private practice, working with an ENT specialist in Mt Gambier and established a small rehabilitation clinic. The practice now specialises in diagnostics and paediatrics in Warrnambool and regional areas throughout Western Victoria, working closely with regional ENT specialists. Medicolegal assessments for industrial deafness are a significant part of his work, along with conducting noise surveys and providing advice to companies to reduce the impact of noise exposure.

Wayne Richards

General Manager Health Safety, Environment and Quality, Transdev Melbourne

Wayne joined Transdev as General Manager Health, Safety, Environment and Quality in August 2016. He has 30 years of experience in technical and executive management roles across aviation, infrastructure and environmental management industries, including a strong track record in strategy development and program execution. Programs led and delivered include refreshing management systems and supporting leadership and behavioural change programs – resulting in significant improvements in health and safety outcomes. He is committed to positive change through active leadership.

Dr Amanda Sillcock

Occupational Physician

Dr Amanda Sillcock is an occupational physician and member of ANZSOM and the Faculty of Occupational and Environmental Medicine. She was Secretary of the Victorian-Tasmanian branch of ANZSOM in the mid-1980s and rejoined the branch council in the early noughties. She was chairperson until 2012 when she became federal President until 2015. She has worked at a number of organisations including the Victorian Railways, Mobil and Toyota. She has worked as a consultant for the last 22 years and visits BOC Gases on a weekly basis. She also works as a Senior Lecturer at Monash University, coordinating the third year occupational and environmental medical courses and a unit of the Master of Public Health. She has a wealth of experience in assessing fitness for work. She has a keen interest in technology and loves to have all the latest new gadgets.

Dr Tim Stewart

Occupational Physician

Tim Stewart came to Australia from Ireland via Yorkshire and after 10 years in Victorian country general practice, specialised and qualified in occupational and environmental medicine. Most of his occupational medicine practice has been in Tasmania. He was a former President of the Faculty of Occupational and Environmental Medicine and believes that a combination of family medicine and occupational medicine gives a broad outlook unique in an age of narrow procedural medicine. Tim also spent several years as a member of Avant's medical advisory council.

Ian Sutcliffe

Return to Work Inspectorate, WorkSafe Victoria

Ian Sutcliffe is the manager of the Return to Work Inspectorate at Worksafe Victoria and oversees the Inspectorate's presence across Victoria. He has over 20 years' experience in workers compensation and health and safety including roles as a RTW Coordinator and Health and Safety Manager in various industries from automotive to food and government. Ian brings a wealth of knowledge in relation to employers and the organisational factors that may give rise to a claim and the barriers that may arise when returning workers to the workforce.

Mr Dirk van Bavel

Orthopaedic Surgeon, Melbourne Hip and Knee

Mr van Bavel completed his medical degree through the University of Melbourne in 1995, winning the 'Neil Bromberger prize in Orthopaedics'. His orthopaedic training was in Victoria, winning the 'Registrar in Training Prize' in 2003. After completing his training, he undertook further fellowship training in hip and knee surgery in Belgium, England and Canada. These fellowships included further training in hip and knee replacement and revision surgery, the use of allografts in surgery, sports knee injuries and patellofemoral problems.

Irene Verins

Manager, Mental Wellbeing, VicHealth

Irene oversees the development of public health approaches to improving mental wellbeing across settings as diverse as the arts, digital environments, workplace health, education, promoting gender equality and social cohesion. An accomplished program and people manager she has established and leads local and international collaborations, designed and delivered innovative grants programs and managed teams at a senior level for many years. She also has a major commitment to building the capacity of workers and workplaces in health promotion and was responsible for an innovative model of professional development at VicHealth. Irene has provided recent advice on advancing mental wellbeing for young people and women to a range of organisations including the World Health Organisation, Movember, the Melbourne Lord Mayor's Charitable Foundation, Department of Education, and others. Her CV reflects the cross sectoral nature of modern public health.

COMPANY PROFILES

MAJOR SPONSOR



Sonic HealthPlus

Sonic HealthPlus is one of Australia’s leading providers of occupational healthcare and general medical services. Their mission is to deliver best-practice healthcare solutions to customers by way of their national network of medical centres, site services and alliance clinics. With over 50 years’ experience, they understand the importance of protecting the health and wellbeing of your company’s greatest asset – its workforce. It is for this reason they employ and work with some of the best and most experienced health professionals, including specialist occupational and environmental physicians, general practitioners, allied health professionals and medical support staff.

For more information about Sonic HealthPlus visit www.sonichealthplus.com.au.

WELCOME RECEPTION SPONSOR



mlcoa

mlcoa is a premier provider of independent medical reporting services to insurers, government departments, self-insured companies and the legal profession. Celebrating 30 years of experience in 2016, mlcoa delivers consistently high levels of reporting services by 300 respected and experienced medical specialists across all capital cities and key regional areas of Australia.

For more information about mlcoa, visit www.mlcoa.com.au.
Or contact Carol Busby - Consultant Resources Coordinator on (08) 8212 6958 or carol.busby@medhealthgroup.com.au.

CONFERENCE DINNER SPONSOR



eReports

Established in 2000, eReports is the largest Australian owned national provider of a broad range of medico-legal services across a wide network of metropolitan and regional consulting locations. We provide an exceptional service standard to a large range of clients in the corporate sector, legal profession, insurance industry, state and federal government departments. eReports offers full support for our specialists including full transparency of financial transactions, management of travel arrangements and flexibility to align with your work and lifestyle preferences.

Our business model is unparalleled and empowers you to be placed amongst a highly accomplished industry leading team of Independent Medical Examiners across Australia.

For more information about eReports visit www.eReports.com.au.

NURSES DINNER SPONSOR



Resile

Our team led by Dr Robert McCartney and Dr Robin ‘Sid’ O’Toole assists organisations in all aspects of occupational health. Our commitment is to maximise the health, wellbeing and productivity of your workforce. Specialist occupational physicians spearhead our multidisciplinary approach to occupational health risk management, supported by a multidisciplinary team of professionals.

For more information about Resile, visit <https://resile.com.au>.

COMPANY PROFILES

SESSION SPONSORS



Safe Work Australia

Safe Work Australia is an Australian government statutory body established in 2008 to develop national policy relating to work, health and safety (WHS) and workers' compensation.

We work in partnership with governments, employers and employees to drive national policy development on WHS and workers' compensation matters. We work to:

- develop and evaluate national policy and strategies
- develop and evaluate the model WHS legislative framework
- undertake research, and
- collect, analyse and report data.

For more information about Safe Work Australia, visit www.safeworkaustralia.gov.au.



WorkSafe Victoria

WorkSafe Victoria plays a critical role in the lives of Victorian employers and workers - as the state's health and safety regulator and as the manager of Victoria's workers compensation scheme. In both capacities, employers and workers are at the heart of our service. Our aim is to keep all workplaces healthy and safe, and to deliver high quality care and treatment when workers are injured.

For more information about WorkSafe Victoria, visit www.worksafe.vic.gov.au.

EXHIBITORS



Alcolizer

Alcolizer Technology is a world-leader in the field of Alcohol and other Drugs (AOD) testing and is recognised as one of Australia's most innovative and forward-thinking companies. Headquartered in Australia, Alcolizer is one of the world's leading manufacturers of alcohol breath testing equipment.

For well over 25 years, law enforcement agencies, industry and personal users trust Alcolizer to keep themselves and their employees safe. Alcolizer is the largest provider of Breath Testing devices to Australian law enforcement workforces and the largest provider to the Australian resources sector. Our products are designed in Australia, for Australia, but shipped around the world wherever people value quality, reliability and innovation.

For more information about Alcolizer, visit www.alcolizer.com.



Amare Safety

Amare Safety commenced operations as a supplier of personal protective equipment and associated products in the Australian market in 1985. It now stands in the marketplace as the leading privately-owned safety house in Australia.

Amare Safety is continually refining and improving on our service offering as well as bringing to the market new products from the world's leading product manufactures such as Prevor France, 3M.

Amare Safety strives to maintain the highest level of customer service in the industry and provide customers access to the widest choice of personal protective safety equipment on the market to achieve best practice

For more information about Amare Safety, visit www.amare.com.au.

COMPANY PROFILES



Bird Healthcare

Bird Healthcare (BHC) is an Australian owned company with over 25 years' experience in developing, manufacturing and providing world class medical innovations, primarily in the respiratory and sleep medicine markets. Our diverse team at BHC bring together extensive scientific, engineering, medical and business knowledge, as well as years of industry experience. Over the past two decades our team at BHC have developed several internationally patented products, which have fast become the gold standard in the medical field.

BHC makes it a priority to understand customer needs with an aim to ensure we supply medical devices that not only work as intended but at a superior level in comparison to market alternatives. BHC is committed to operating in accordance with its mission and values which is to produce and provide market leading medical technologies, for best patient diagnostic and treatment outcomes, whilst providing impeccable support and product. BHC has worked diligently to ensure it maintains an impeccable company culture and reputation in the market. We are delighted to have worked with many individuals from various medical fields over the past two decades. However, if this is the first time we have been given the opportunity to work with you, we look forward to tailoring a solution that works best for you.

For more information about Bird Healthcare, visit www.birdhealthcare.com.



Cohort Software

Cohort software for occupational health saves users time and money by automating common tasks such as; appointment bookings, producing a list of health surveillance recalls, providing reports to management, and collating a full set of patient records. This allows more focused time to be spent on what is important: the business of adding value as a service provider.

For more information about Cohort Software, visit www.australismedical.com/occupational-health-software.



Elumina

The Elumina Group was established in 1999 to provide employers with specialised workers' compensation claims management, risk management and occupational health and safety services. In 2002, Elumina recognised the need for a simple cost effective software program to assist employers in the management of the administrative aspects of workers' compensation and injury management. Quickclaim was developed and released to the public in 2004. To compliment the release of Quickclaim, Elumina developed Quicksafe. Quicksafe is a comprehensive OHS management system that enables employers to report and track all incidents, record and manage all facets of risk management including risk assessments, hazardous substances, plant and equipment and a range of other features.

For more information about Elumina products, visit www.elumina.com.au.



Honeywell

Honeywell's solutions enhance productivity and safety for more than half a billion workers annually. Our productivity solutions include a mix of products, from rugged mobile computers, voice-enabled software and workflows, bar code scanners, and printing solutions. We are a global leader in the industry with a wide portfolio of personal protective equipment, including connected products that track the locations and status of workers and first responders in hazardous locations.

For more information about Honeywell, visit www.honeywell.com.

COMPANY PROFILES



Lime Medicolegal

LIME Medicolegal is a specialist independent medical opinion provider, answering questions including:

- The effects of work on an individual's health and
- The effect an individual's health has on their ability to work
- Causation of injury or illness, and
- Disability resulting from illness or injury.

As Occupational Physicians we are the medical specialists specifically trained in the determination of work-relatedness of injury and illness. Organisations are increasingly aware of the role that optimal employee health and wellness play in terms of bottom line performance. We can offer advice on how to navigate the psycho-social, medical and legal interplay of health issues in contemporary workplaces. For more information about Lime Medicolegal, visit www.limeml.com.au.



Lung Health Promotion Centre (The Alfred)

The Centre is committed to providing accessible, evidence-based, holistic education and support for health professionals. We believe this approach is essential to maintaining quality health care education. This empowers health professionals to promote self-management principles for people with chronic respiratory conditions resulting in improved health outcomes.

For more information about the Lung Health Promotion Centre, visit www.lunghealth.org.



Medicolegal Express

Medicolegal Express was borne out of a busy clinical practice, in which we see many third party compensable patients. A significant number of these patients were not receiving the treatment they needed and were entitled to because of so-called independent medical evaluations' furnished by specialists who were clearly biased, out of touch with contemporary standards of practice, or offering opinions outside their area of expertise. We saw a dire need to create a service that offers truly impartial reports, provided by specialists who actively practice (or recently practiced) in that area. Medicolegal Express is highly experienced in the provision of a variety of medico-legal services including:

- Claimant assessments
- Medical reports
- Independent medical examinations
- Permanent impairment assessments
- Written opinions
- Medical litigation case evaluation
- Expert witnesses

Our exclusive group of over 30 leading consultants across most specialties, with multiple locations across Australia, provide an exceptionally high standard of opinions and reports.

For more information about Medicolegal Express, visit www.medicolegalexpress.com.au.



Medilaw

The Medilaw Group is a network of providers committed and focused on being the supplier of choice for medico-legal solutions. Expanding nationally we remain the trusted local provider of medical specialists, offering our consultants with opportunities that are well balanced with their clinical practice, hospital work and independent medico-legal work.

Medilaw Group includes Next Health, Medilaw, Australian Medico-Legal Group, CaseWorks and MindSense with the group looking to expand by inviting a small select group of local brands who meet the high standards established by the foundation businesses.

The Medilaw Group will continue to look to strengthen their national coverage and build on the existing capabilities. Determined to be the local partner, with access to and support of a national network. We invite you to join other premier medical professionals and enjoy the substantial benefits of being a Medilaw Group consultant in an organisation committed to providing its consultants with superior quality of service.

For more information about Medilaw, visit www.medilaw.com.au.

DELEGATES

Prasad Abeydeera	Charles Edwards	Leon Le Leu	Michele Phillips
Keith Adam	Michael England	Jane Leow	Jill Plummer
Scott Adams	Kristine Finlay	Virginia Li	Megan Powell
Gaini Allen	David Fish	Diane Lieutenant	Karina Powers
Anthony Arklay	Martyn Flahive	Graham Long	Mina Roberts
Christine Best	Edward Foley	John Low	Frances Robson-Marcellin
Carmen Betteridge	Tshepho Kelly Gabathuse	Themis Lui	Thomas Rosenthal
Maznieda binti Mahjom	John Gall	William Ma	Leigh-Anne Ruch
Foti Blaher	Gan Wee Hoe	Michael MacMahon	Tim Rumball
Cathy Bones	Rudi Gasser	Vern Madden	Simon Ryder-Lewis
Graham Boothby	Barry Gilbert	Lesedi Madibela	Reza Sabetghadam
John Boyes	Robert Gillett	John Maitland	Shaun Salimi
Cheryl Boysen	David Goddard	John Malios	David Scott
Debra Bracher	Peter Gould	Nigel Marsh	John Silver
Anthony (Tony) Brown	David Gras	Sandra McBurnie	Malcolm Sim
Amanda Budd	Lydia Gunston	Robina McCann	Jennifer Sisson
Nicholas Burke	John Guthrie	Robert McCartney	Lara Smith
Paul Burke	Christopher Hammersley	Emma McCartney	Eva Smith
Mark Burns	Milly Hanlon	David McGrath	Penelope Speldewinde
Beata Byok	Lisa Harman	Christine McNeil	Arthur Stratigopoulos
Kirrily Caldwell	Wendy Hayes	Charles McVicker	Melissa Sullivan
Gregory Cameron	Philip Haynes	Merylese Mercieca	John Suthers
Wing Chan	Lorraine Henley	David Middleton	Cheryl Tang Hon Yue
Pearlle Chan	Marcus Hirschfield	Melinda Miller	Suzanne Teh
James Chan	Bruce Hocking	Reem Mina	Amanda Thompson
Poh Lin Cheah	David Imlah	Sarah Moss	Adrienne Tracy
Steven Clarke	Rosemary Ireland	Nhlanhla Mpofu	Bernadette Trifiletti
Peter Clarke	Helen Jagger	Alan Muir	Andrew Van Ballegooyen
Anne Coady	Andrea James	Denis Mulkeen	Sylvia Van Camp
Sandra Code	Isabelle Jonsson-Lear	Josh Munn	Louise Van Geyzel
Peter Connaughton	Miguel Kabilio	Helen Neighbour	Clara Walker
Jacqueline Crisostomo	Jim Kafiris	Iain Nicolson	Chris Walls
Diane Croxford	Sally Kane	George Nossar	Anthony Webster
Jack Dale	Victor Karlov	Hilary Oakley	Edwin Whiteside
Joleen Darby	Elizabeth Keating	Christopher Oates	Isiri Wickramarachchi
Brian Dare	Catherine Kelaher	Victoria Oey	Peter Wilkins
Ariane Delessert	Courtenay Kenny	Hui Ting Ooi	Roy Wilkinson
Debra Dennis	Azhar Khan	Brett Oppermann	Zen Yap
Sovan Dey	Jung Wan Koo	Vasilios (Bill) Panayiaris	Dominic Yong
Andrew Dudley	Boitumelo Kopano	John Parkes	
Robyn Dye	Devan Kumarasamy	Nathan Pastor	
Garth Eaton	Roger Lai	Benson Pek	
Ruth Edwards	Robyn Laurie	Cassandra Pethrick	



The Australian and New Zealand Society
of Occupational Medicine

CERTIFICATE

✧ OF ATTENDANCE ✧

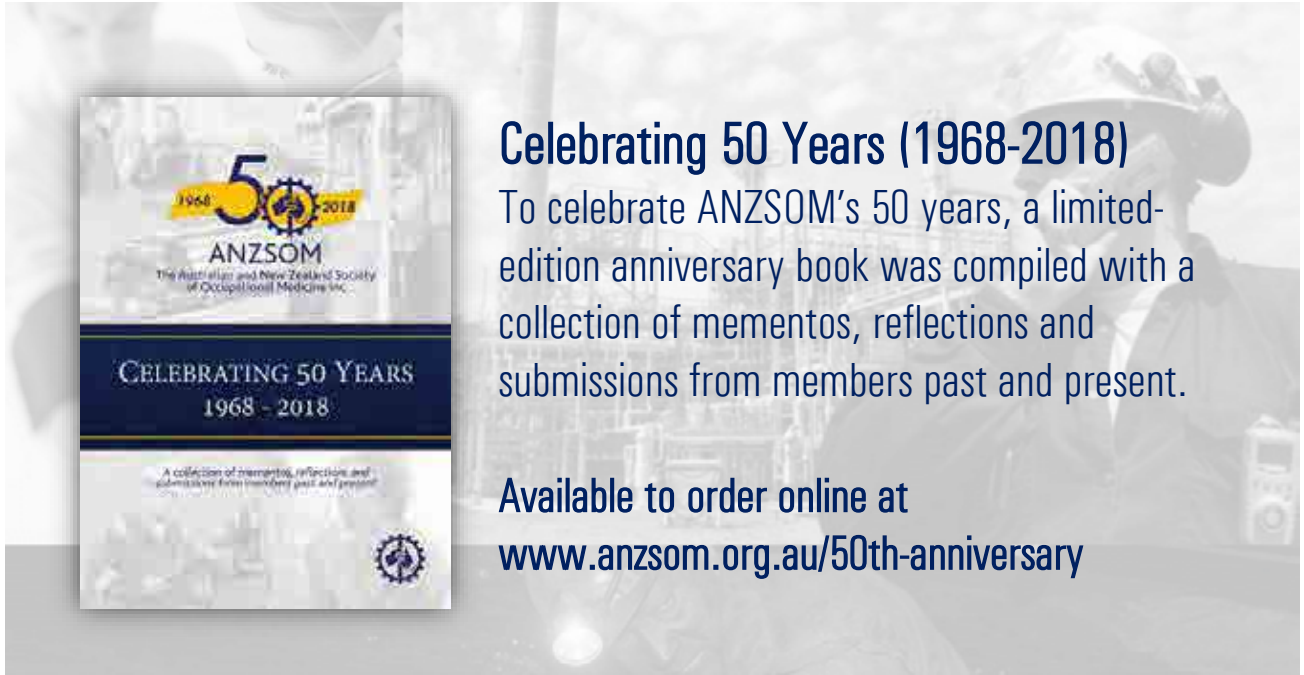
~THIS IS TO CERTIFY THAT~

ATTENDED THE ANZSOM
ANNUAL SCIENTIFIC MEETING
7TH – 10TH OCTOBER 2018 | MELBOURNE, VICTORIA

MS MELINDA MILLER
~ANZSOM FEDERAL PRESIDENT~

*VALID ATTENDANCE ONLY IF ATTACHED TO A CONFERENCE TAX INVOICE IN THE DELEGATES NAME



This image shows a single sheet of white paper with horizontal blue ruling lines. The lines are evenly spaced and run across the width of the page. There are no margins, text, or other markings on the paper.

To celebrate ANZSOM's 50 years, a limited-edition anniversary book was compiled with a collection of mementos, reflections and submissions from members past and present.

Available to order online at

The ANZSOM SA/NT Branch, in collaboration with the Australasian Faculty of Occupational and Environmental Medicine, invite you to the

ANZSOM Annual Scientific Meeting

ADELAIDE

20 – 23 October 2019

AFOEM is proud to be a Scientific Program Partner for the 2019 ASM



The Australian and New Zealand
Society of Occupational Medicine



Australasian Faculty of Occupational
and Environmental Medicine